

APP CRS <b>100°</b>	Rwy ldg <b>6892</b> TDZE <b>24</b> Apt Elev <b>24</b>
------------------------	---

# RNAV (GPS) RWY 10

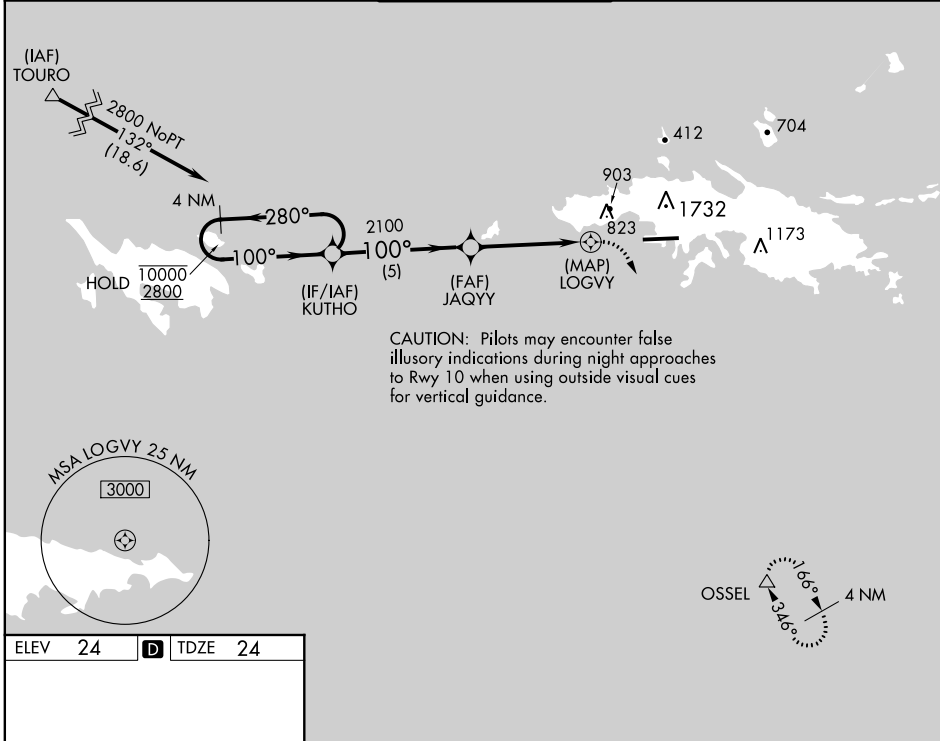
CYRIL E KING (STT)(TIST)

RNP APCH - GPS.

**▽** Circling NA at night. Circling NA north of Rwy 10-28.  
**▲** Cat A and B missed approach climb gradient is standard.

MISSED APPROACH: Climbing right turn to 2800 direct OSSEL and hold.  
 \* Missed approach requires minimum climb of 411 feet per NM to 1900 for Category C/D aircraft.

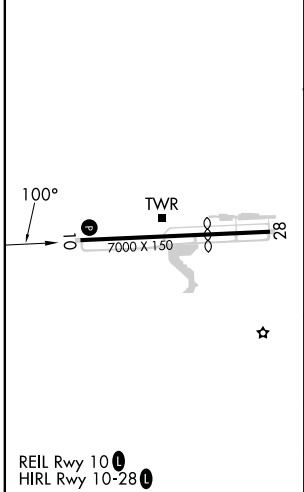
ATIS <b>124.0</b>	SAN JUAN CENTER <b>128.65 279.6</b>	ST. THOMAS TOWER ★ <b>118.8</b> (CTAF) <b>0 257.6</b> <b>118.1</b> (NORTH OF ISLAND)	GND CON <b>121.9</b>	UNICOM <b>122.95</b>
----------------------	--	--	-------------------------	-------------------------



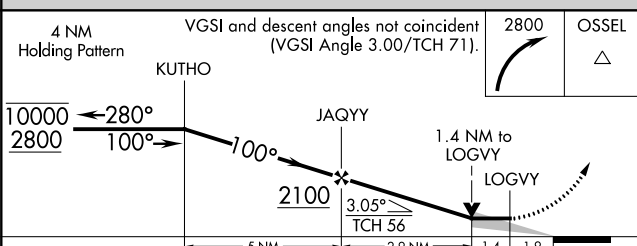
SE-3, 28 NOV 2024 to 26 DEC 2024

SE-3, 28 NOV 2024 to 26 DEC 2024

ELEV	24	<b>D</b>	TDZE	24
------	----	----------	------	----



REIL Rwy 10 **0**  
 HIRL Rwy 10-28 **0**



CATEGORY	A	B	C	D
LNNAV MDA*	NA		1180-3	1156 (1200-3)
LNNAV MDA	1180-2½	1156 (1200-2½)	1560-3	1536 (1600-3)
CIRCLING	1180-2½	1156 (1200-2½)	1560-3	1536 (1600-3)