

VOR/DME COY <b>108.2</b> Chan 19	APP CRS <b>259°</b>	Rwy ldg TDZE <b>40</b> Apt Elev <b>74</b>
--	------------------------	---

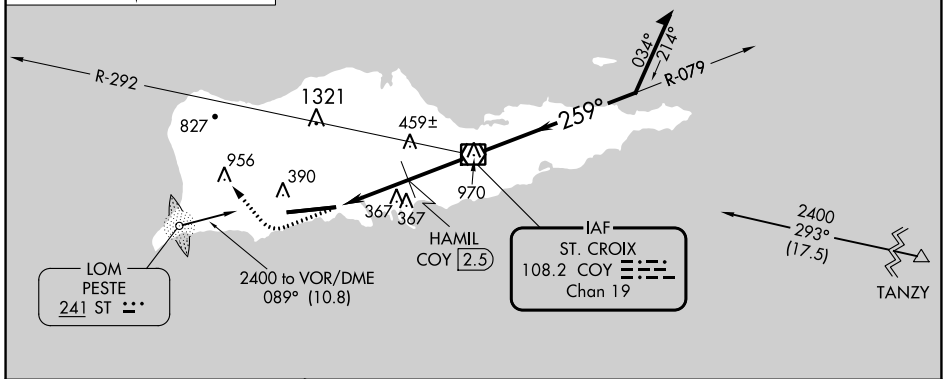
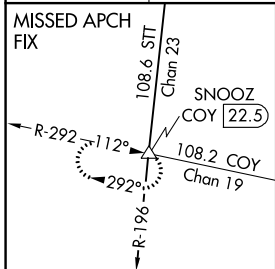
# VOR RWY 28

HENRY E ROHLSEN (STX)(TISX)

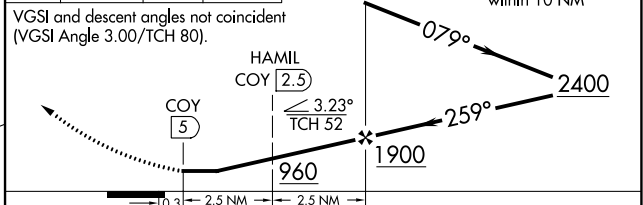
**▼** Helicopter visibility reduction below 1 SM NA. Rwy 28 Straight-in and Circling minimums NA at night. When local altimeter setting not received, procedure NA. Circling NA north of Rwy 10-28.

**MISSED APPROACH:** Climb to 2000 then climbing right turn to 2400 via heading 330° and COY R-292 to SNOOZ Int/COY 22.5 DME and hold.

ATIS <b>135.65</b>	SAN JUAN CENTER <b>128.65 279.6</b>	ST. CROIX TOWER ★ <b>118.6 (CTAF) 239.3</b>	GND CON <b>121.7</b>	UNICOM <b>123.0</b>
-----------------------	--	--	-------------------------	------------------------



ELEV 74	TDZE 40
---------	---------



REIL Rwy 28  
HIRL Rwy 10-28

FAF to MAP 5 NM

Knots	60	90	120	150	180
Min:Sec	5:00	3:20	2:30	2:00	1:40

CATEGORY	A	B	C	D
S-28	960-1¼	920 (900-1¼)	960-2¾ 920 (900-2¾)	960-3 920 (900-3)
CIRCLING	960-1¼	886 (900-1¼)	960-2¾ 886 (900-2¾)	960-3 886 (900-3)
HAMIL FIX MINIMUMS				
S-28	640-1	600 (600-1)	640-1½ 600 (600-1½)	640-1¾ 600 (600-1¾)
CIRCLING	640-1	566 (600-1)	720-1¾ 646 (700-1¾)	720-2 646 (700-2)

# VOR RWY 28

SE-3, 28 NOV 2024 to 26 DEC 2024

SE-3, 28 NOV 2024 to 26 DEC 2024