

LOC I-RDR <b>109.9</b>	APCH CRS <b>357°</b>	Rwy Idg <b>12,351</b> TDZE <b>911</b> Arprt Elev <b>911</b>
---------------------------	-------------------------	---

[USAF]

RADAR or DME required.



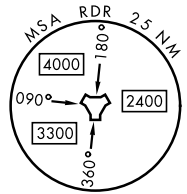
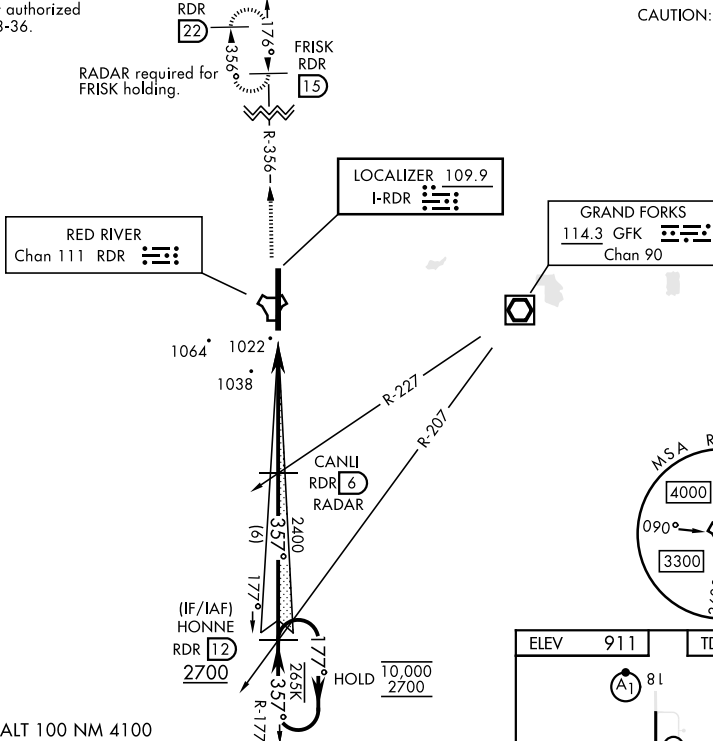
MISSED APPROACH: Climb to 3000 on RDR TACAN R-356 to FRISK and hold.

\* When ALS inop, increase RVR to 40 and vis to 3/4 mile.  
\*\* When ALS inop, increase CAT AB RVR to 55 and vis to 1 mile, CAT CDE vis to 1 1/2 miles.

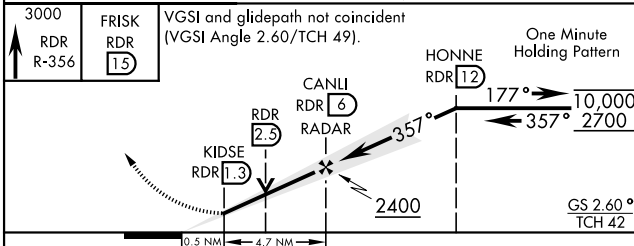
ATIS <b>273.45</b>	APP CON <b>118.1 318.1</b>	RED RIVER TOWER <b>124.9 349.0</b>	GND CON <b>119.15 275.8</b>	CLNC DEL <b>119.15 360.7</b>
-----------------------	-------------------------------	---------------------------------------	--------------------------------	---------------------------------

\*\*\* Circling not authorized E of Rwy 18-36.

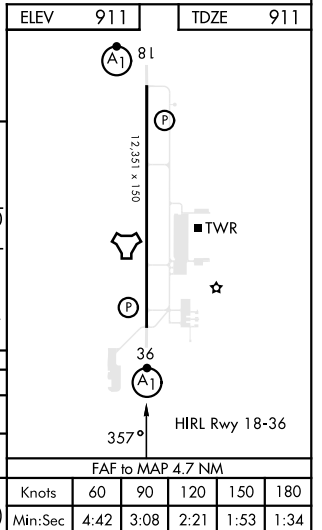
CAUTION: Low TCH 42



EMERG SAFE ALT 100 NM 4100



CATEGORY	A	B	C	D	E
S-ILS 36 *	1111/24		200	(200-1/2)	
S-LOC 36 **	1440/24	529 (600-1/2)	1440/55	529	(600-1)
CIRCLING ***	1440-1	529 (600-1)	1440-1 1/2 529 (600-1/2)	1540-2 629 (700-2)	1560-2 1/4 649 (700-2 1/4)



NC-1, 28 NOV 2024 to 26 DEC 2024

NC-1, 28 NOV 2024 to 26 DEC 2024