

COPTER TACAN 125°

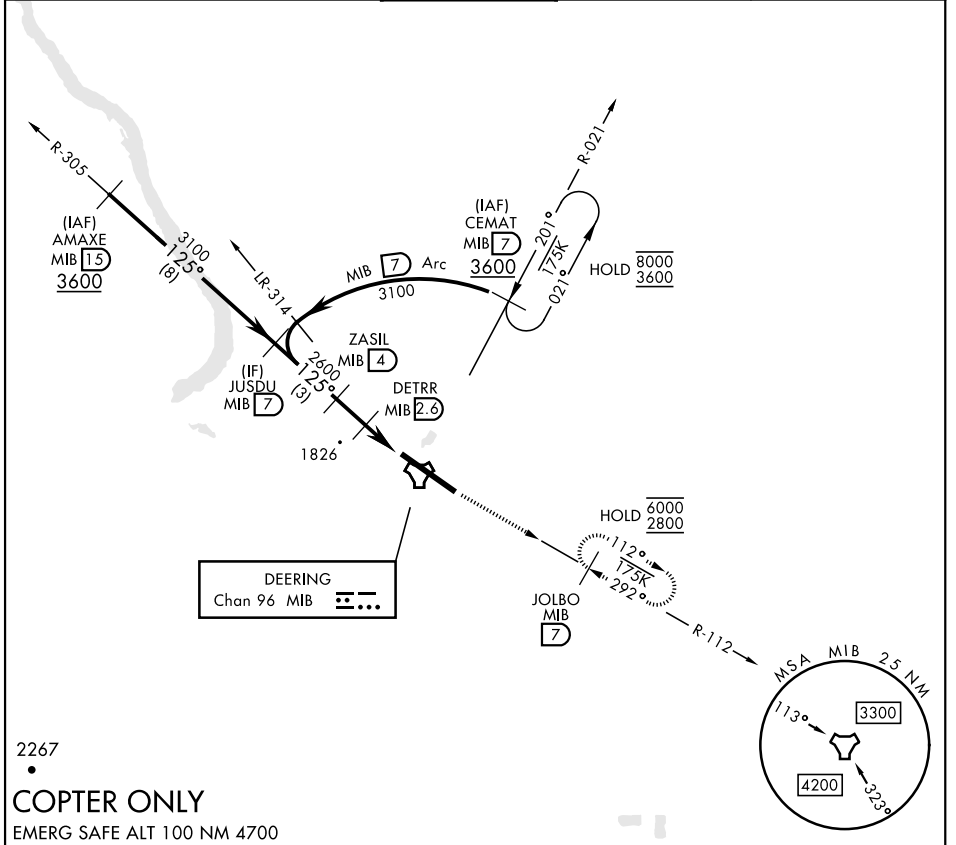
TACAN MIB Chan 96	APCH CRS 125°	Rwy ldg 13,198 TDZE 1666 Arpt Elev 1666
-----------------------------	-------------------------	--

[USAF]

MINOT AFB (KMIB)

* When ALS inop, increase RVR to 28 and vis to ½ mile.	ALSF-1 	MISSED APPROACH: Climb to 3600 via MIB TACAN R-112 direct JOLBO and hold.
--	------------	---

ATIS ★ 278.8	MINOT APP CON 119.6 363.8	MINOT TOWER ★ 120.65 253.5	GND CON 134.0 275.8	CLNC DEL 326.2
------------------------	-------------------------------------	--------------------------------------	-------------------------------	--------------------------



NC-1, 28 NOV 2024 to 26 DEC 2024

NC-1, 28 NOV 2024 to 26 DEC 2024

2267

COPTER ONLY

EMERG SAFE ALT 100 NM 4700

JUSDU MIB 7	ZASIL MIB 4	DETRR MIB 2.6	3600 MIB R-112	JOLBO MIB 7	ELEV 1666	TDZE 1666
3100	2600	2200	3600	3600		
125°		2.65° TCH 47	MIB TACAN		125°	
1.4 NM		1.5 NM		13,198 x 300		
CATEGORY	COPTER					
H-125°*	2080/12	414	(500-¼)			
					HIRL Rwy 12-30	

COPTER TACAN 125°