

MINOT, NORTH DAKOTA

# ILS or LOC Y RWY 30

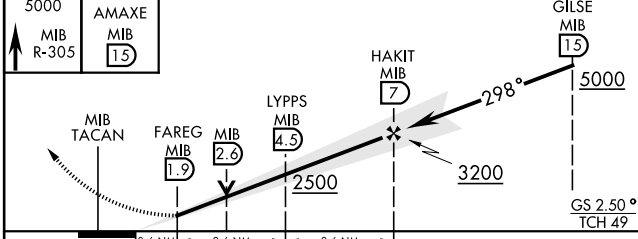
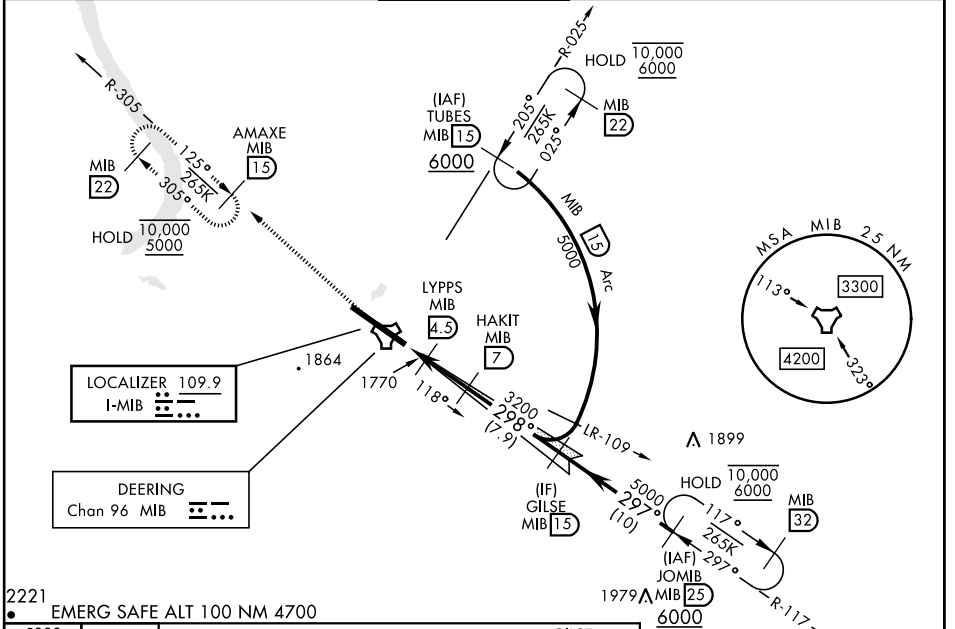
LOC I-MIB <b>109.9</b>	APCH CRS <b>298°</b>	Rwy Idg <b>13,198</b> TDZE <b>1646</b> Arprt Elev <b>1666</b>
---------------------------	-------------------------	---

[USAF]

MINOT AFB (KMIB)

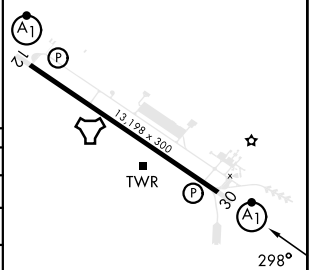
RADAR or DME required.		ALSF-1 A1	MISSED APPROACH: Climb to 5000 via MIB TACAN R-305 direct AMAXE and hold.
<p>*When ALS inop, increase RVR to 40 and vis to 3/4 mile                  **When ALS inop, increase RVR to 55, vis to 1 mile.                  ***Circling not authorized N of Rwy 12-30.                  ****When ALS inop, increase CAT AB RVR to 55 and vis to 1 mile, CAT CDE vis to 1 1/2 miles.</p>			

ATIS ★ <b>278.8</b>	MINOT APP CON <b>119.6 363.8</b>	MINOT TOWER ★ <b>120.65 253.5</b>	GND CON <b>134.0 275.8</b>	CLNC DEL <b>326.2</b>
------------------------	-------------------------------------	--------------------------------------	-------------------------------	--------------------------



ELEV 1666	TDZE 1646
-----------	-----------

CATEGORY	A	B	C	D	E
S-ILS 30*	1846/24		200	(200-1/2)	
S-LOC 30**	2020/24	374 (400-1/2)	2020/35	374	(400-3/4)
CIRCLING***	2120-1 454 (500-1)	2140-1 474 (500-1)	2180-1 1/2 514 (600-1 1/2)	2320-2 654 (700-2)	2320-2 1/4 654 (700-2 1/4)
LOCAL ALTIMETER WITHOUT LAST STEPDOWN FIX					
S-LOC 30****	2140/24	494 (500-1/2)	2140/50	494	(500-1)
CIRCLING***	2140-1	474 (500-1)	2180-1 1/2 514 (600-1 1/2)	2320-2 654 (700-2)	2320-2 1/4 654 (700-2 1/4)



HIRL Rwy 12-30					
FAF to MAP 5.2 NM					
Knots	60	90	120	150	180
Min:Sec	5:12	3:28	2:36	2:05	1:44

MINOT, NORTH DAKOTA  
Amdt 2 16MAY24

48° 25'N-101° 21'W

MINOT AFB (KMIB)

# ILS or LOC Y RWY 30

NC-1, 28 NOV 2024 to 26 DEC 2024

NC-1, 28 NOV 2024 to 26 DEC 2024