

LOC/DME I-HWID <b>111.5</b> Chan 52	APP CRS <b>288°</b>	Rwy Idg TDZE Apt Elev	<b>5018</b> <b>50</b> <b>52</b>
---	------------------------	-----------------------------	---------------------------------------

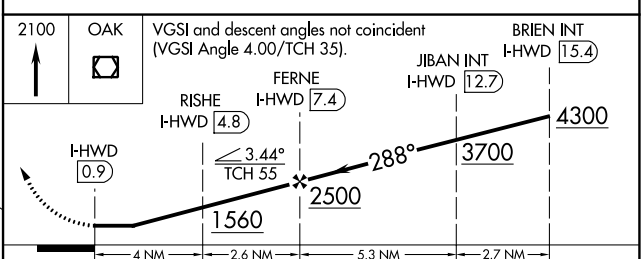
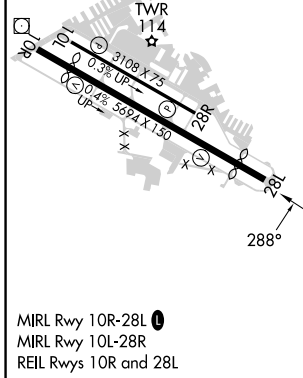
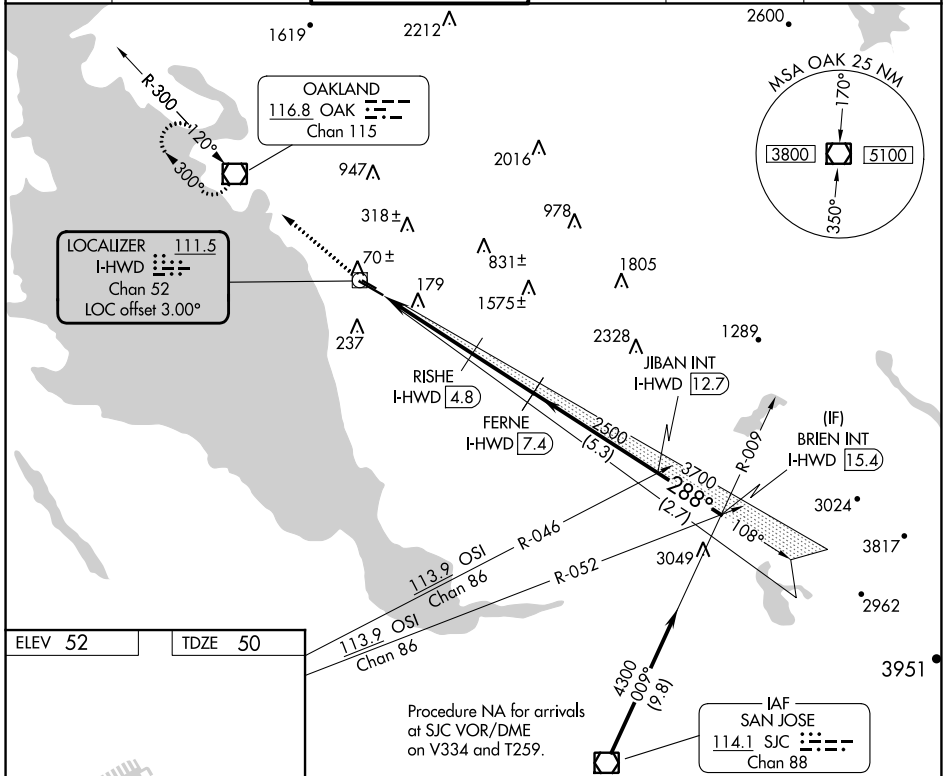
# LOC/DME RWY 28L

HAYWARD EXEC (HWD)

**⚠** Circling NA north of Rwy 10L-28R. When local altimeter setting not received, use Oakland altimeter setting: increase all MDA 20 feet and Circling Cat D visibility ¼ SM. Rwy 28L helicopter visibility reduction below ¾ SM NA.

**MISSED APPROACH:** Climb to 2100 direct OAK VOR/DME and hold.

ATIS <b>126.7</b>	NORCAL APP CON <b>124.4 351.8</b>	<b>HAYWARD TOWER *</b> <b>120.2 (CTAF) 257.8</b>	GND CON <b>121.4</b>	CLNC DEL <b>128.05</b>	UNICOM <b>122.95</b>
----------------------	--------------------------------------	---	-------------------------	---------------------------	-------------------------



CATEGORY	A	B	C	D
S-28L	500-1	450 (500-1)	500-1⅓	450 (500-1⅓)
CIRCLING	540-1	488 (500-1)	540-1½ 488 (500-1½)	920-2¾ 868 (900-2¾)

SW-2, 28 NOV 2024 to 26 DEC 2024

SW-2, 28 NOV 2024 to 26 DEC 2024