

WAAS CH 40330 W28A	APP CRS 285°	Rwy Idg 5018 TDZE 50 Apr Elev 52
--	------------------------	---

RNAV (GPS) RWY 28L

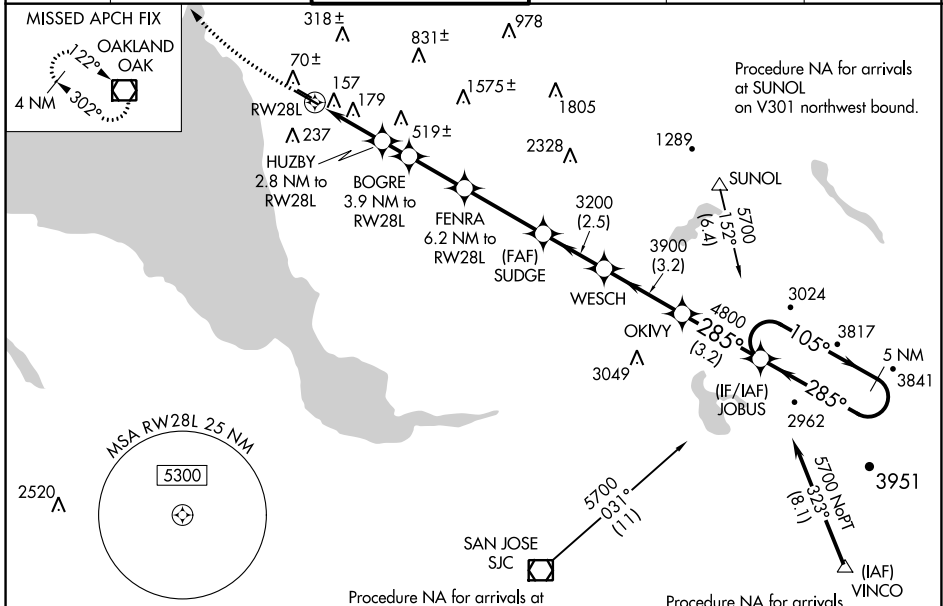
HAYWARD EXEC(HWD)

RNP APCH.

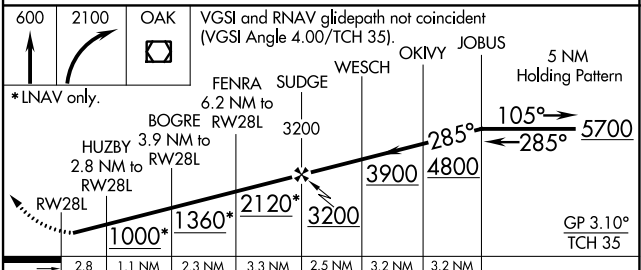
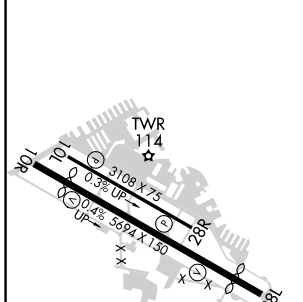
Baro-VNAV NA. When local altimeter setting not received, use Oakland altimeter setting: increase all DA/MDA 20 feet, and LNAV/VNAV all Cats and LNAV Cat C/D visibility 1/8 SM and Circling Cat D visibility 1/4 SM. Circling NA north of Rwy 10L-28R. Rwy 28L: Helicopter visibility reduction below 3/4 SM NA.

MISSED APPROACH: Climb to 600 then climbing right turn to 2100 direct OAK VOR/DME and hold.

ATIS 126.7	NORCAL APP CON 124.4 351.8	HAYWARD TOWER ★ 120.2 (CTAF) 0 257.8	GND CON 121.4	CLNC DEL 128.05	UNICOM 122.95
----------------------	--------------------------------------	--	-------------------------	---------------------------	-------------------------



ELEV 52	TDZE 50
---------	---------



CATEGORY	A	B	C	D
LPV DA		348-1	298 (300-1)	
LNAV/VNAV DA		400-1½	350 (400-1½)	
LNAV MDA	460-1	410 (500-1)	460-1½	410 (500-1½)
CIRCLING	540-1	488 (500-1)	540-1½ 488 (500-1½)	920-2¾ 868 (900-2¾)

MIRL Rwy 10R-28L
MIRL Rwy 10L-28R
REIL Rwy 10R and 28L

SW-2, 28 NOV 2024 to 26 DEC 2024

SW-2, 28 NOV 2024 to 26 DEC 2024