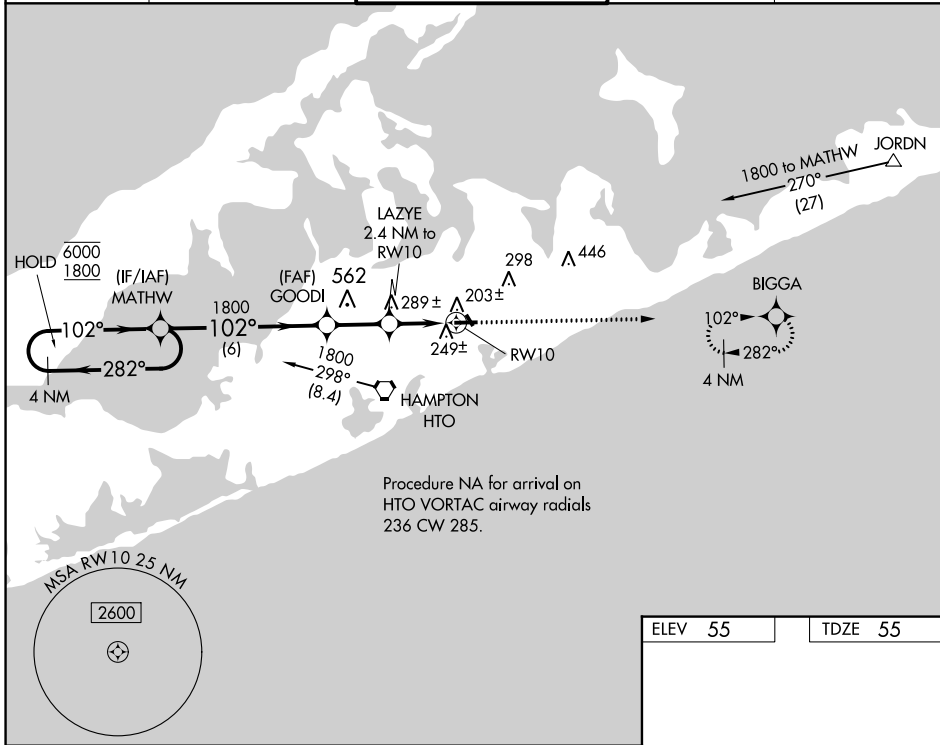


WAAS CH <b>77844</b> <b>W10B</b>	APP CRS <b>102°</b>	Rwy Idg <b>4255</b> TDZE <b>55</b> Apt Elev <b>55</b>
--	------------------------	---

# RNAV (GPS) Z RWY 10

EAST HAMPTON TOWN (JPX)

RNP APCH - GPS.		<p><b>⚠</b> Rwy 10 helicopter visibility reduction below 1 SM NA. Baro-VNAV NA when using Westhampton Beach altimeter setting. For uncompensated Baro-VNAV systems, LNAV/VNAV NA below -1.5°C or above 54°C. When local altimeter setting not received, use Westhampton Beach altimeter setting; increase LPV DA to 404 feet; increase LNAV/VNAV DA to 543 feet; and increase all MDAs 60 feet. Straight-in Rwy 10 at night, operational VGSI required, remain on or above VGSI glidepath until threshold.</p>		<p>MISSED APPROACH: Climb to 2000 direct BIGGA and hold.</p>	
AWOS-3PT <b>118.075</b>	NEW YORK APP CON <b>125.975 343.65</b>	EAST HAMPTON TOWER ★ <b>125.225 (CTAF) 0</b>	GND CON <b>121.9</b>	CLNC DEL <b>118.95</b>	



NE-2, 28 NOV 2024 to 26 DEC 2024

NE-2, 28 NOV 2024 to 26 DEC 2024

4 NM Holding Pattern		VGSI and RNAV glidepath not coincident (VGSI Angle 3.30/TCH 49).		ELEV 55	TDZE 55
<p>MATHW</p> <p>6000 ← 282°</p> <p>1800 → 102°</p> <p>GP 3.42°</p> <p>TCH 60</p>		<p>GOODI</p> <p>1800</p> <p>LAZYE 2.4 NM to RW10</p> <p>980</p> <p>RW10</p>	<p>2000</p> <p>BIGGA</p>		
6 NM		2.2 NM		2.4 NM	
CATEGORY	A	B	C	D	
LPV DA	361-1		306 (400-1)	NA	
LNAV/VNAV DA	500-1 $\frac{3}{8}$		445 (500-1 $\frac{3}{8}$ )	NA	
LNAV MDA	500-1		445 (500-1)	500-1 $\frac{3}{8}$	
		445 (500-1 $\frac{3}{8}$ )		NA	
<p>MIRL Rwy 10-28 <b>Ⓢ</b></p> <p>REIL Rwy 10</p> <p>REIL Rwy 28 <b>Ⓢ</b></p>					