

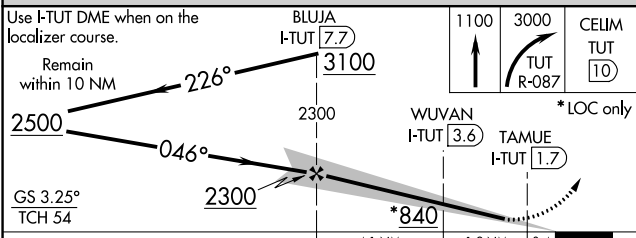
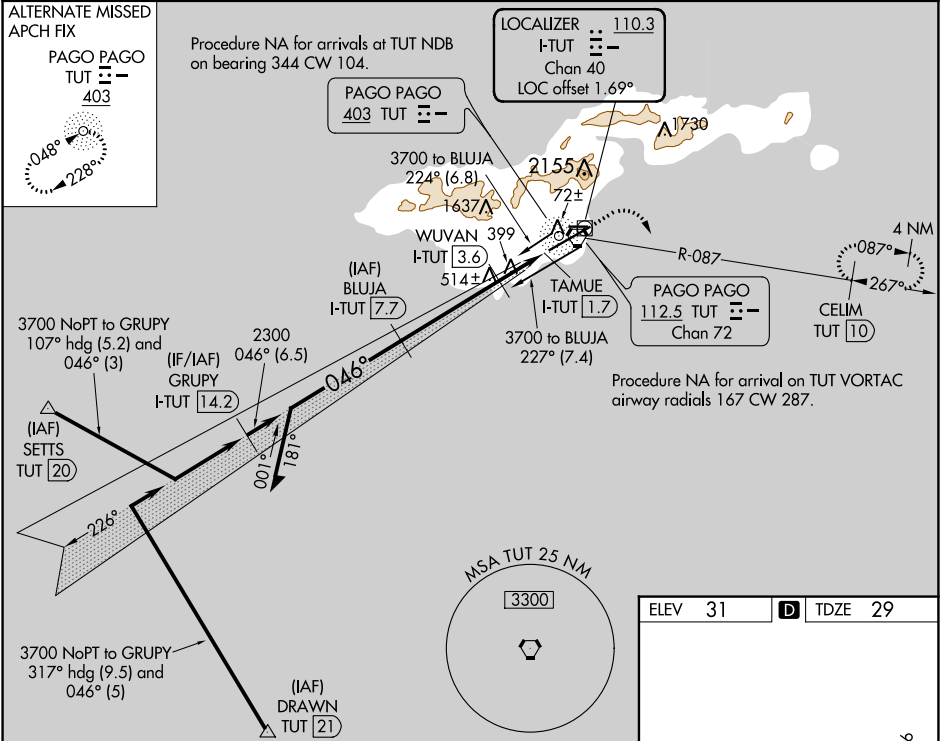
LOC/DME I-TUT <b>110.3</b> Chan <b>40</b>	APP CRS <b>046°</b>	Rwy Idg <b>8200</b> TDZE <b>29</b> Apt Elev <b>31</b>
---	------------------------	---

# ILS or LOC RWY 5

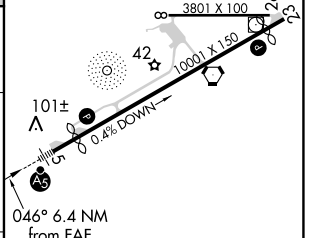
PAGO PAGO INTL (PPG) (NSTU)

DME required.		MALSR	MISSED APPROACH: Climb to 1100 then climbing right turn to 3000 on TUT VORTAC R-087 to CELIM/TUT 10 DME and hold, continue climb-in-hold to 3000.
<p><b>▼</b> Circling NA northwest of Rwy 5-23. Rwy 5 helicopter visibility reduction below 3/4 SM NA. For inop ALS, increase S-ILS 5 all Cats visibility to 2 1/2 SM; increase S-LOC 5 Cat A visibility to 1 SM and Cats C/D to 2 SM.</p>			

AWOS-3PT <b>127.925</b>	FALEOLO APP CON <b>118.1 6.553(HF)</b>	CTAF <b>122.9</b>	<b>118.3</b>
----------------------------	---	----------------------	--------------



ELEV 31	TDZE 29
---------	---------



CATEGORY	A	B	C	D
S-ILS 5	841-1 7/8 812 (900-1 7/8)			
S-LOC 5	780-3/4 751 (800-3/4)		780-1 3/4 751 (800-1 3/4)	
<b>C</b> CIRCLING	780-1 749 (800-1)	780-1 1/4 749 (800-1 1/4)	820-2 1/2 789 (800-2 1/2)	860-2 3/4 829 (900-2 3/4)

HIRL Rwy 5-23 and 8-26

PAC, 31 OCT 2024 to 26 DEC 2024

PAC, 31 OCT 2024 to 26 DEC 2024