

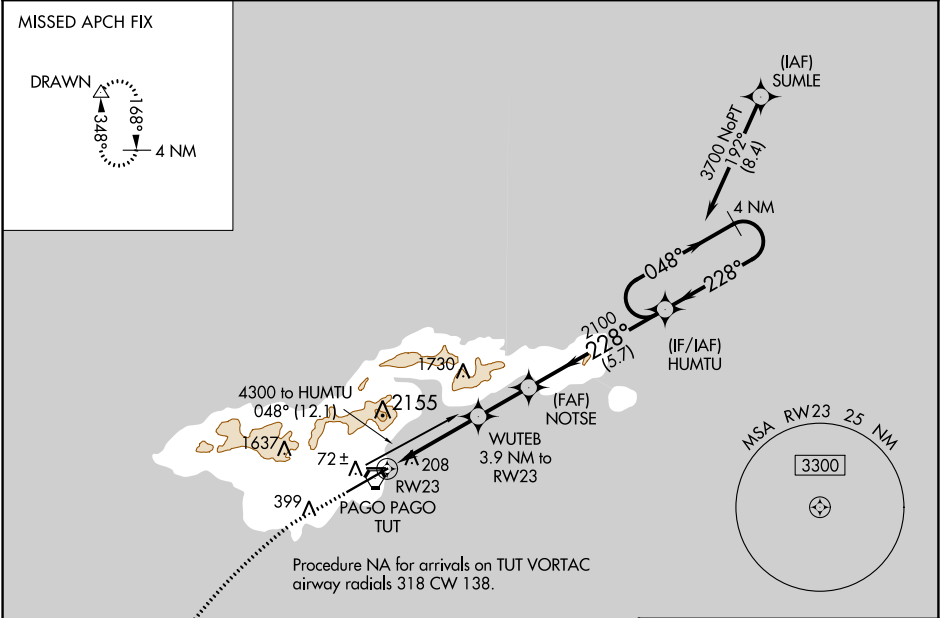
APP CRS	Rwy Idg	9200
228°	TDZE	9
	Apt Elev	32

RNAV (GPS) RWY 23

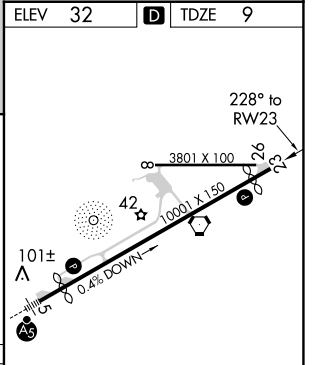
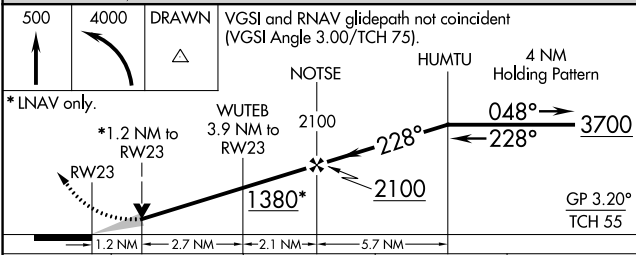
PAGO PAGO INTL (PPG) (NSTU)

RNP APCH.	For uncompensated Baro-VNAV systems, LNAV/VNAV NA below 22°C or above 54°C. When local altimeter setting not received, procedure NA. Circling NA northwest of Rwy 5-23.	MISSED APPROACH: Climb to 500 then climbing left turn to 4000 direct DRAWN and hold.
-----------	---	--

AWOS-3PT 127.925	FALEOLO APP CON 118.1 6.553 (HF)	CTAF 122.9	118.3
----------------------------	--	----------------------	--------------



ELEV 32	TDZE 9
---------	--------



CATEGORY	A	B	C	D
LNAV/VNAV DA	489-1 $\frac{3}{8}$ 480 (500-1 $\frac{3}{8}$)			
LNAV MDA	460-1	451 (500-1)	460-1 $\frac{3}{8}$	451 (500-1 $\frac{3}{8}$)
CIRCLING	520-1 488 (500-1)	700-1 668 (700-1)	820-2 $\frac{1}{4}$ 788 (800-2 $\frac{1}{4}$)	860-2 $\frac{3}{4}$ 828 (900-2 $\frac{3}{4}$)

HIRL Rwy 5-23 and 8-26

PAC, 31 OCT 2024 to 26 DEC 2024

PAC, 31 OCT 2024 to 26 DEC 2024