

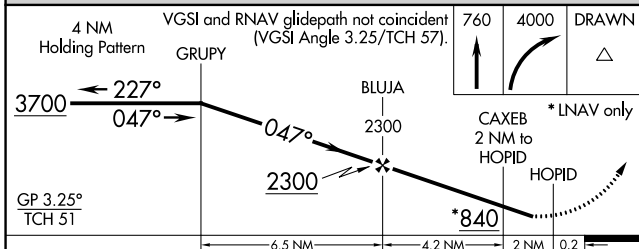
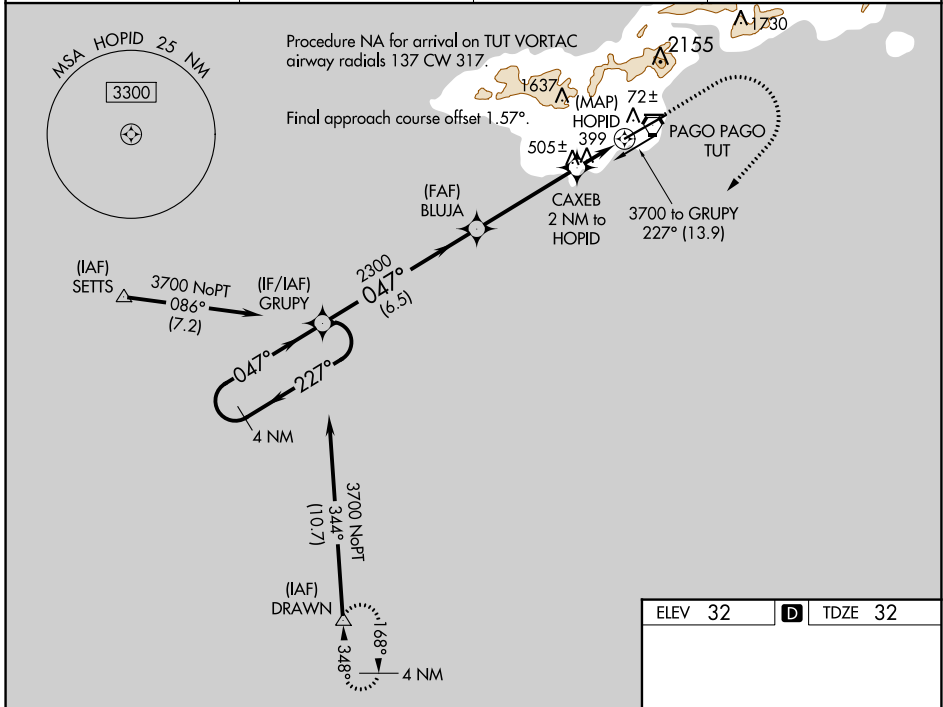
APP CRS	Rwy ldg	8200
047°	TDZE	32
	Apt Elev	32

RNAV (GPS) RWY 5

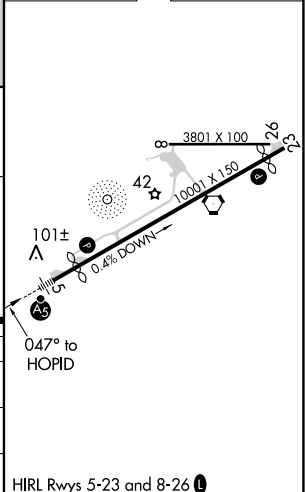
PAGO PAGO INTL (PPG) (NSTU)

RNP APCH.	MALS R	MISSED APPROACH: (Maintain 185 K max until 760) Climb to 760 then climbing right turn to 4000 direct DRAWN and hold.
<p>▼ For uncompensated Baro-VNAV systems, LNAV/VNAV NA below 22°C or above 54°C.</p> <p>▲ When local altimeter setting not received, procedure NA. Circling NA northwest of Rwy 5-23. Rwy 5 helicopter visibility reduction below ¾ SM NA. Inop table does not apply to LNAV Cats A/B. For inop ALS, increase LNAV/VNAV all Cats visibility to 1¾ SM and LNAV Cats C/D visibility to 2 SM.</p>		

AWOS-3PT 127.925	FALEOLO APP CON 118.1 6.553(HF)	CTAF 122.9	118.3 0
----------------------------	---	----------------------	----------------



ELEV 32	D TDZE 32
---------	------------------



CATEGORY	A	B	C	D
LNAV/VNAV DA	551-1		519 (600-1)	
LNAV MDA	760-1	728 (800-1)	760-1½	728 (800-1½)
C CIRCLING	760-1	728 (800-1)	820-2¼ 788 (800-2¼)	860-2¾ 828 (900-2¾)

PAC, 31 OCT 2024 to 26 DEC 2024

PAC, 31 OCT 2024 to 26 DEC 2024