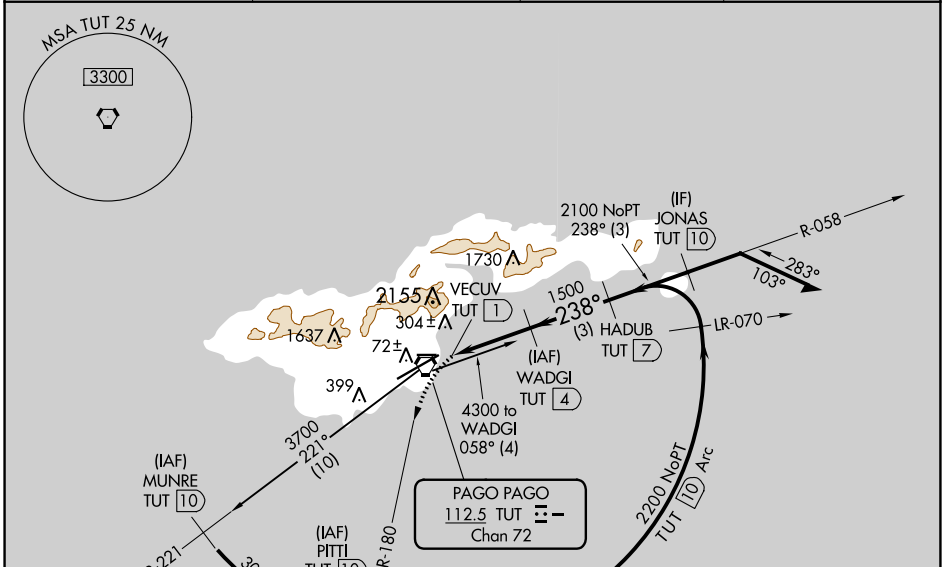


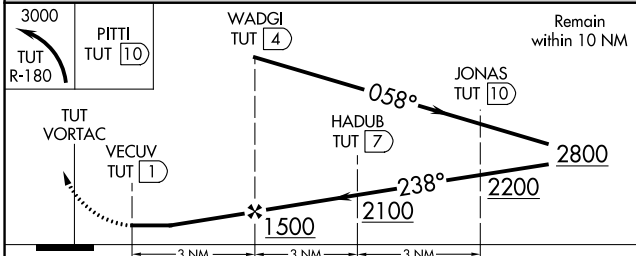
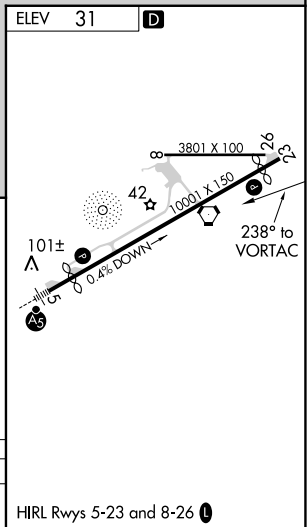
VORTAC TUT 112.5 Chan 72	APP CRS 238°	Rwy Idg TDZE Apt Elev	N/A N/A 31
---------------------------------------	------------------------	-----------------------------	---------------------------------------

VOR or TACAN-B
PAGO PAGO INTL (PPG) (NSTU)

DME required.		MISSED APPROACH: Climbing left turn to 3000 on TUT VORTAC R-180 to PITTI/10 DME and hold, continue climb-in-hold to 3000.	
Circling NA northwest of Rwy 5-23.		CTAF 122.9	118.3 0
AWOS-3PT 127.925	FALEOLO APP CON 118.1 6.553(HF)		



Procedure NA for arrivals on TUT VORTAC airway radials 358 CW 118.



CATEGORY	A	B	C	D
C CIRCLING	560-1 529 (600-1)	700-1 669 (700-1)	820-2¼ 789 (800-2¼)	860-2¾ 829 (900-2¾)

PAC, 31 OCT 2024 to 26 DEC 2024

PAC, 31 OCT 2024 to 26 DEC 2024