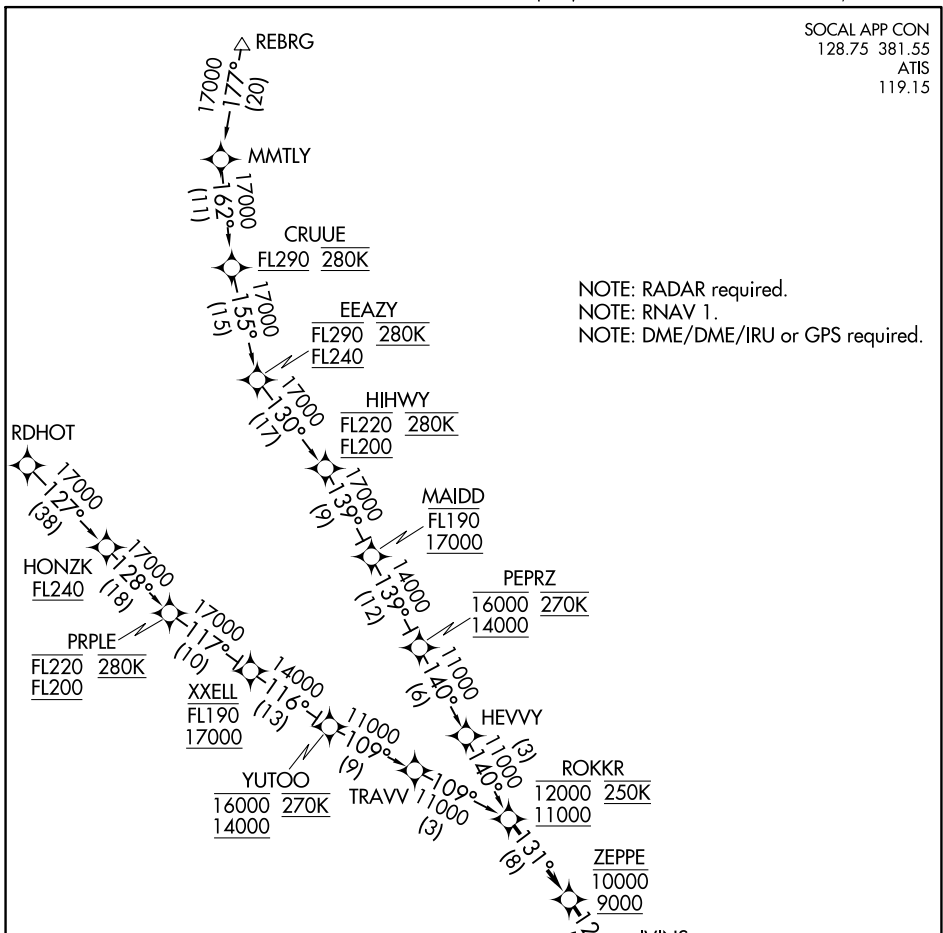


BONJO TWO ARRIVAL (RNAV)

AL-5023 (FAA)

SANTA MONICA MUNI (SMO)
SANTA MONICA, CALIFORNIA

SOCAL APP CON
128.75 381.55
ATIS
119.15



SW-3, 28 NOV 2024 to 26 DEC 2024

SW-3, 28 NOV 2024 to 26 DEC 2024

ARRIVAL ROUTE DESCRIPTION

- HIHWY TRANSITION (HIHWY.BONJO2)
- HONZK TRANSITION (HONZK.BONJO2)
- PRPLE TRANSITION (PRPLE.BONJO2)
- RDHOT TRANSITION (RDHOT.BONJO2)
- REBRG TRANSITION (REBRG.BONJO2)

From ROKKR on track 131° to cross ZEPPE between 9000 and 10000, then on track 129° to cross IVINS at or above 8000, then on track 113° to cross ROLLI at or above 6000, then on track 084° to cross BONJO at 5000, then on track 103°. Expect RADAR vectors to final approach course.

NOTE: Chart not to scale.

BONJO TWO ARRIVAL (RNAV)

SANTA MONICA, CALIFORNIA
SANTA MONICA MUNI (SMO)