

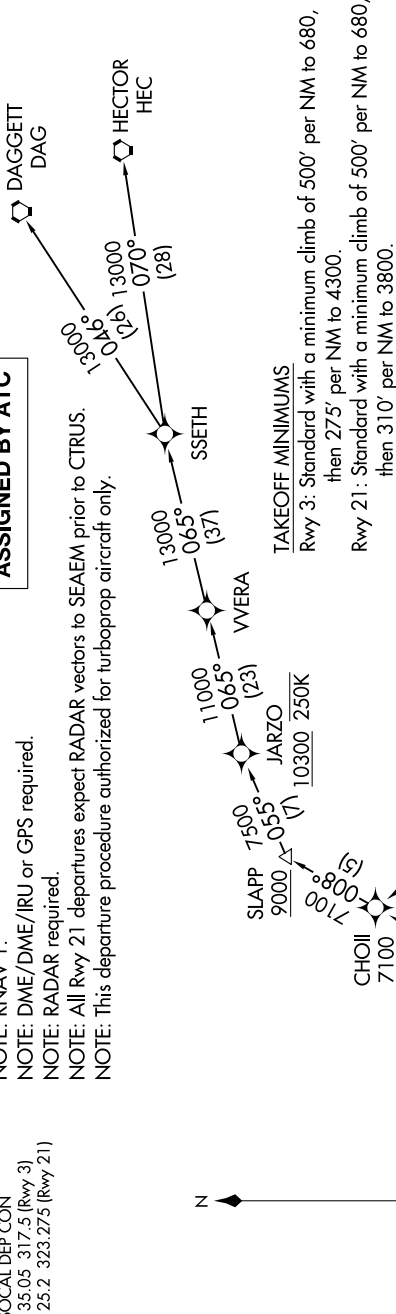
# SANTA MONICA THREE DEPARTURE (RNAV)

SW-3, 28 NOV 2024 to 26 DEC 2024

SANTA MONICA TOWER\*  
120.1 257.8  
SOCAL DEP CON  
135.05 317.5 (Rwy 3)  
125.2 323.275 (Rwy 21)

NOTE: RNAV 1.  
NOTE: DME/DME/IRU or GPS required.  
NOTE: RADAR required.  
NOTE: All Rwy 21 departures expect RADAR vectors to SEAEEM prior to CTRUS.  
NOTE: This departure procedure authorized for turboprop aircraft only.

**TOP ALTITUDE:  
ASSIGNED BY ATC**



### TAKEOFF MINIMUMS

Rwy 3: Standard with a minimum climb of 500' per NM to 680, then 275' per NM to 4300.  
Rwy 21: Standard with a minimum climb of 500' per NM to 680, then 310' per NM to 3800.

### DEPARTURE ROUTE DESCRIPTION

**TAKEOFF RUNWAY 3:** Climb heading 033° to 680, then direct to cross **TREKK** at or above 4000, then on track 036° to **DARTS**, then on track 329° to cross **CHOII** at or above 7100, thence . . .

**TAKEOFF RUNWAY 21:** Climb heading 213° to intercept course 260° to **WRASH**, then on track 262° to cross **CTRUS** at or above 5000, then on track 350° to cross **DZINE** at or above 6000, then on track 042° to **SEAEEM**, then on track 008° to cross **CHOII** at or above 7100, thence . . .

. . . on assigned transition maintain altitude assigned by ATC, expect filed altitude 10 minutes after departure.

DAGGETT TRANSITION (SMO3.DAG)

HECTOR TRANSITION (SMO3.HEC)

NOTE: Chart not to scale.

SW-3, 28 NOV 2024 to 26 DEC 2024

# SANTA MONICA THREE DEPARTURE (RNAV)