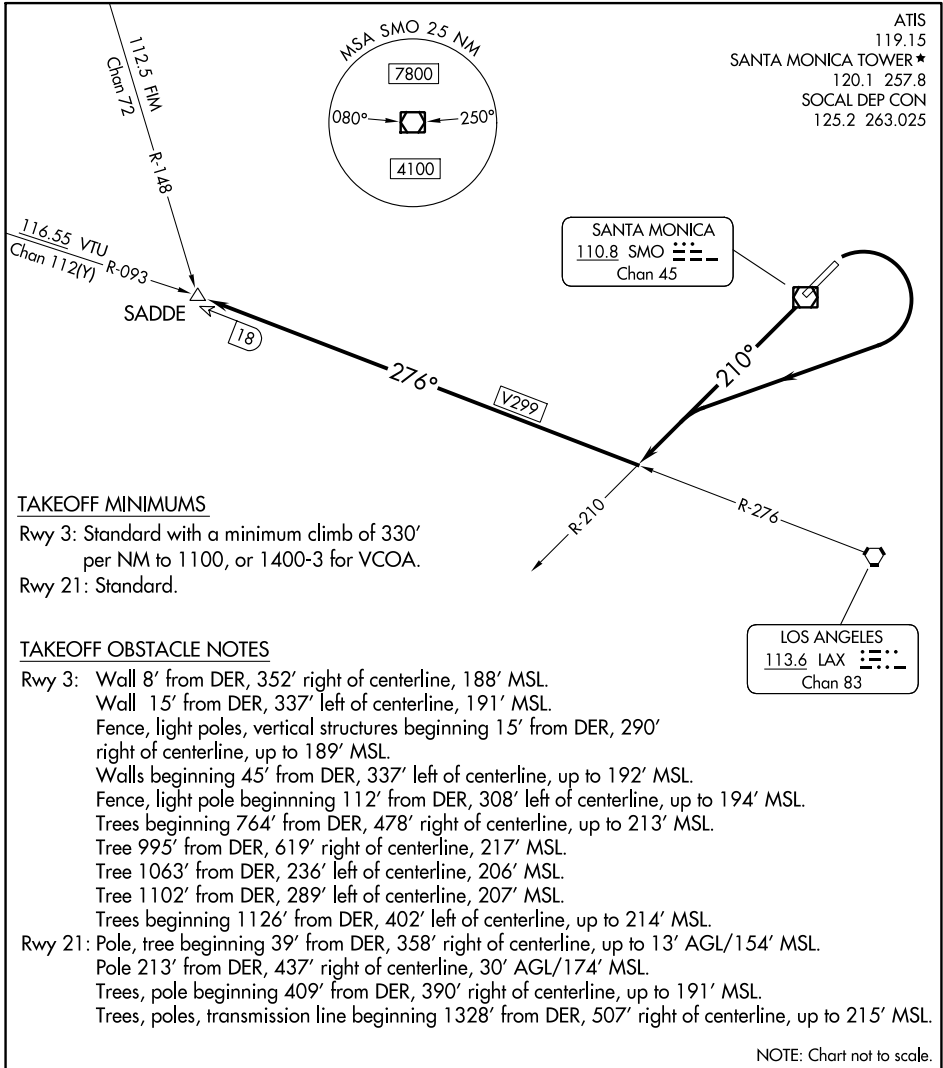


# TOPANGA THREE DEPARTURE (OBSTACLE)



## DEPARTURE ROUTE DESCRIPTION

TAKEOFF RUNWAY 3: Climbing right turn to 5000 on SMO R-210 and on LAX R-276 to SADDE INT.

TAKEOFF RUNWAY 21: Climb to 5000 on SMO R-210 and on LAX R-276 to SADDE INT.

VCOA RUNWAY 3: Obtain ATC approval for VCOA when requesting IFR clearance. Climb in visual conditions to cross SMO VOR/DME at or above 1400, then continue climb to 5000 on SMO R-210 and LAX R-276 to SADDE INT.