

| | | | |
|--|------------------------|-----------------------------|---|
| WAAS CH 77831 W07A | APP CRS 069° | Rwy Idg TDZE Apt Elev | 5506 812 812 |
|--|------------------------|-----------------------------|---|

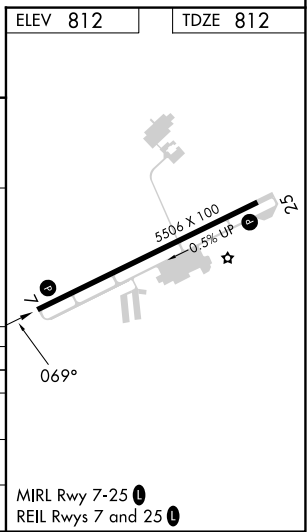
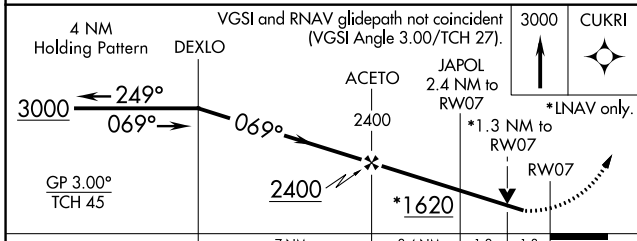
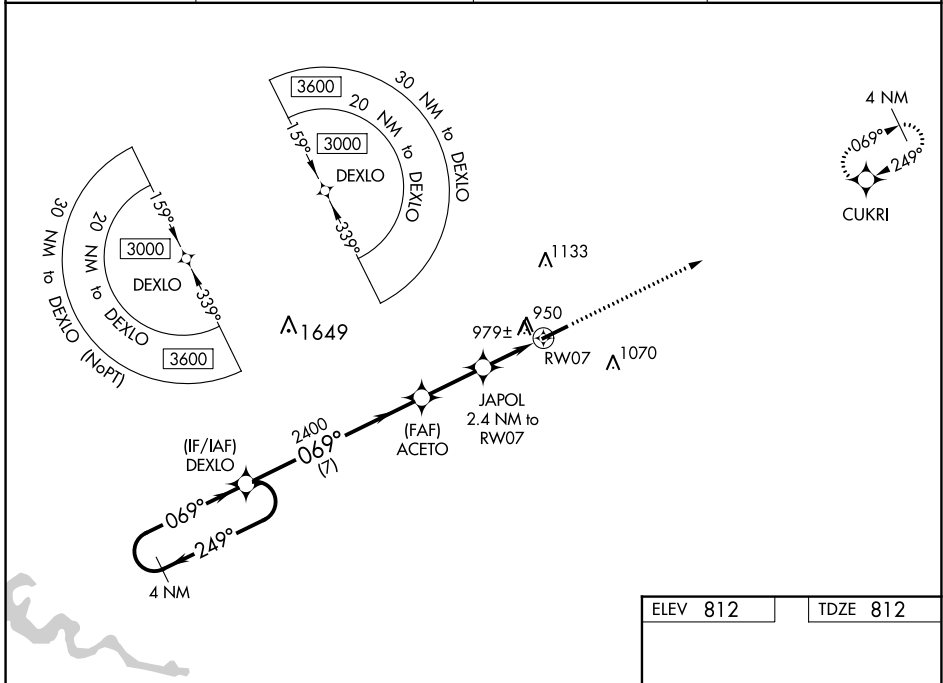
RNAV (GPS) RWY 7

CAPITAL CITY (F'T)

⚠ For uncompensated Baro-VNAV systems, LNAV/VNAV NA below -16°C (4°F) or above 54°C (130°F). DME/DME RNP-0.3 NA. When local altimeter setting not received, use Lexington altimeter setting and increase LPV DA to 1149 feet and LNAV/VNAV DA to 1293 feet and all visibilities ¼ mile; increase all MDAs 80 feet, LNAV visibility Cats C and D ½ mile, and Circling visibility Cats C and D ¼ mile. VDP and Baro-VNAV NA with Lexington altimeter setting. Helicopter visibility reduction below ¾ SM NA.

MISSED APPROACH:
Climb to 3000 direct
CUKRI and hold.

| | | | |
|------------------------|--|---------------------------|---------------------------------|
| ASOS 119.275 | LEXINGTON APP CON 120.75 298.9 | CLNC DEL 118.65 | UNICOM 122.8 (CTAF) 0 |
|------------------------|--|---------------------------|---------------------------------|



| CATEGORY | A | B | C | D |
|-------------------|-----------------------|-----------------------|-------------------------------|-----------------------|
| LPV DA | 1087-7/8 | | 275 (300-7/8) | |
| LNAV/VNAV DA | 1231-13/8 | | 419 (500-13/8) | |
| LNAV MDA | 1240-1 | 428 (500-1) | 1240-1 1/4 | 428 (500-1 1/4) |
| C CIRCLING | 1280-1 468 (500-1) | 1380-1 568 (600-1) | 1440-1 3/4 628 (700-1 3/4) | 1440-2 628 (700-2) |

SE-1, 28 NOV 2024 to 26 DEC 2024

SE-1, 28 NOV 2024 to 26 DEC 2024