

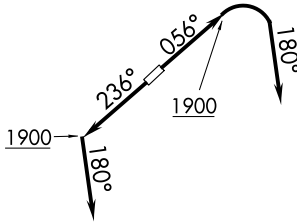
(AHMET4.KKIDS) 23278

AL-5027 (FAA)

CUYAHOGA COUNTY (CGF)  
CLEVELAND, OHIO

# AHMET FOUR DEPARTURE (RNAV)

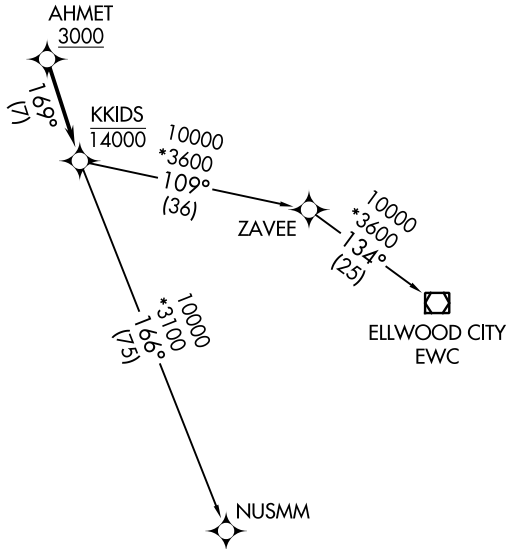
D-ATIS  
 119.95  
 CLNC DEL  
 121.85 (when tower closed)  
 GND CON  
 121.85  
 COUNTY TOWER \*  
 118.5 (CTAF)  
 CLEVELAND DEP CON  
 125.35 346.325



**TOP ALTITUDE:  
 ASSIGNED BY ATC**

TAKEOFF MINIMUMS:  
 Rwys 6, 24: Standard  
 with minimum climb of  
 500' per NM to 1400.

NOTE: RNAV 1.  
 NOTE: RADAR required.  
 NOTE: DME/DME/IRU or GPS required.



NOTE: Chart not to scale.



## DEPARTURE ROUTE DESCRIPTION

TAKEOFF RUNWAY 6: Climb on heading 056° to 1900, then right turn on heading 180° or as assigned by ATC for RADAR vectors to cross AHMET at or above 3000, thence....  
TAKEOFF RUNWAY 24: Climb on heading 236° to 1900, then on heading 180° or as assigned by ATC for RADAR vectors to cross AHMET at or above 3000, thence....

....on track 169° to cross KKIDS at or below 14000, then on (transition).  
 Maintain altitude assigned by ATC, expect filed altitude ten minutes after departure.

ELLWOOD CITY TRANSITION (AHMET4.EWC)  
NUSMM TRANSITION (AHMET4.NUSMM)

**AHMET FOUR DEPARTURE (RNAV)**  
 (AHMET4.KKIDS) 26MAR20

CLEVELAND, OHIO  
 CUYAHOGA COUNTY (CGF)

EC-2, 28 NOV 2024 to 26 DEC 2024

EC-2, 28 NOV 2024 to 26 DEC 2024