

WAAS CH 42528 W24A	APP CRS 238°	Rwy Idg 5000 TDZE 873 Apt Elev 876
--	------------------------	---

RNAV (GPS) RWY 24

CUYAHOGA COUNTY (CGF)

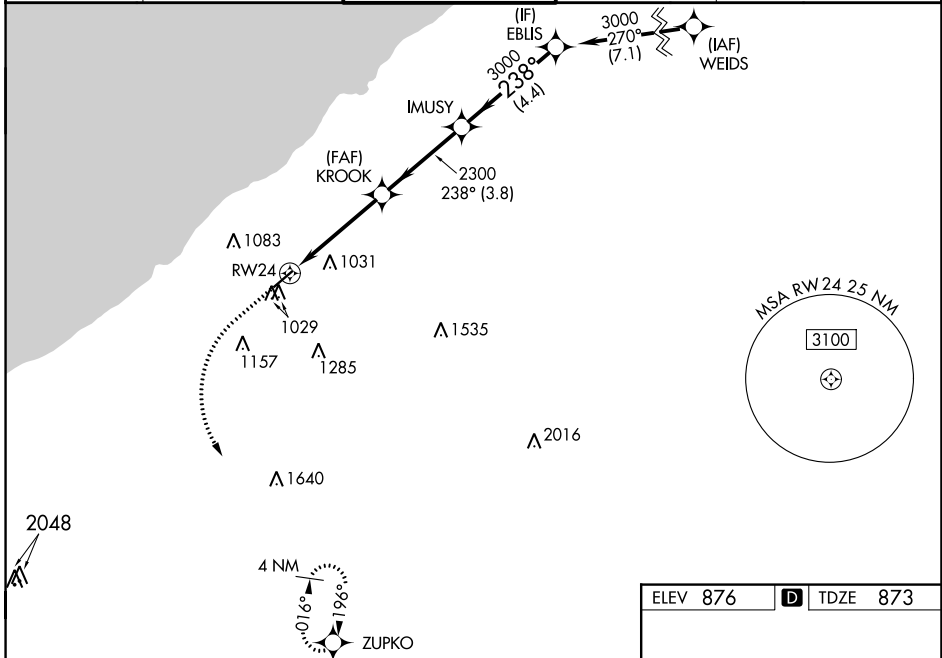
RNP APCH.

⚠ For uncompensated Baro-VNAV systems, LNAV/VNAV NA below -16°C or above 38°C. For inop ALS increase LNAV/VNAV visibility all Cats to 7/8 SM, LNAV Cat C, D to 1 1/8 SM.



MISSED APPROACH:
Climb to 2500 then climbing left turn to 3000 direct ZUPKO and hold.

D-ATIS 119.95	CLEVELAND APP CON 125.35 346.325	COUNTY TOWER★ 118.5 (CTAF) Ⓛ	GND CON 121.85	CLNC DEL 121.85 (when tower closed)
-------------------------	--	---	--------------------------	--



EC-2, 28 NOV 2024 to 26 DEC 2024

EC-2, 28 NOV 2024 to 26 DEC 2024

2500	3000	ZUPKO	
<p>*LNAV only</p> <p>*1.1 NM to RW24</p> <p>1.1 NM 3.2 NM 3.8 NM 4.4 NM</p>			
KROOK 2300		IMUSY	EBLIS 3000
2300		238°	3000
RW24		GP 3.00° TCH 44	
CATEGORY	A	B	C
LPV DA		1073-1/2	200 (200-1/2)
LNAV/VNAV DA		1178-1/2	305 (400-1/2)
LNAV MDA	1280-1/2	407 (500-1/2)	1280-3/4 407 (500-3/4)
C CIRCLING	1400-1 524 (600-1)	1500-1 624 (700-1)	1560-2 684 (700-1) 1620-2 1/2 744 (800-2 1/2)

