

COPTER NDB RWY 34

LOM IL 278	APCH CRS 353°	Rwy Ldg TDZE Arpt Elev 2676 910 910
----------------------	-------------------------	--

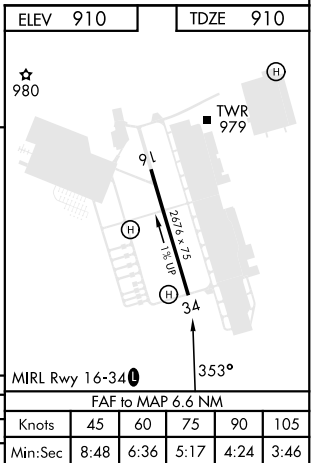
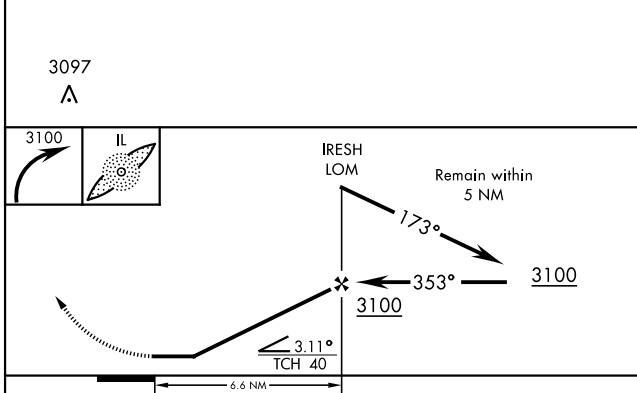
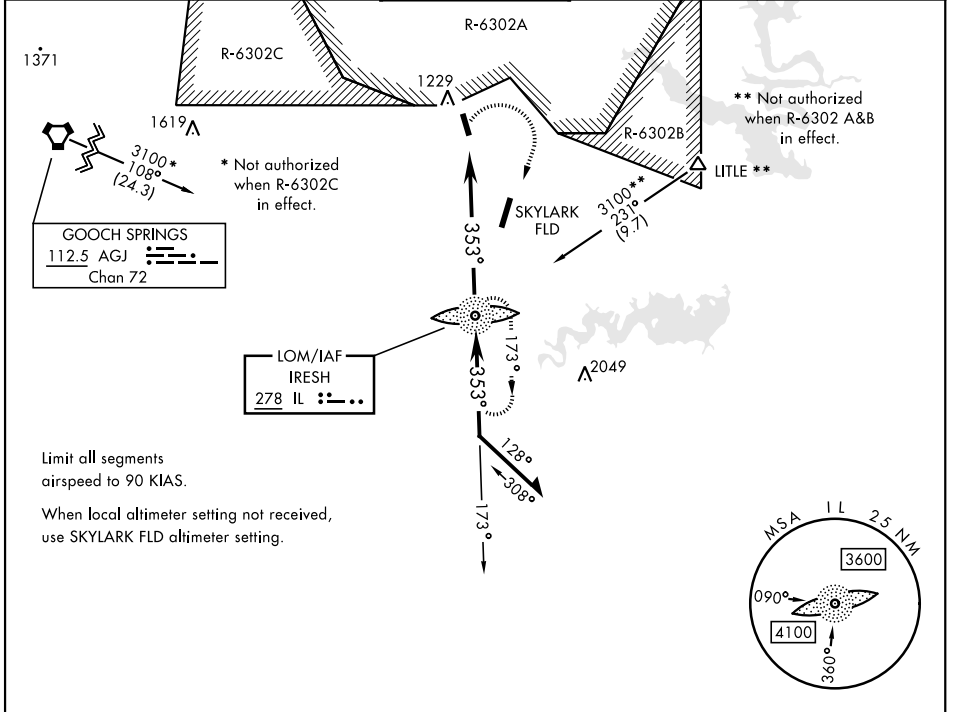
AL-5031 [USA]

YOAKUM DEFRENN AHP (KHLR)

RADAR required for missed approach.

MISSED APPROACH: Climbing right turn to 3100 direct IL LOM and hold.

ATIS★ 138.6	GRAY APP CON 120.075 323.15	TOWER★ 119.650 269.45	GND CON 133.85 225.4	CLNC DEL 225.4
-----------------------	---------------------------------------	---------------------------------	--------------------------------	--------------------------



CATEGORY	COPTER		
S-34	1400-1	490	(500-1)
CIRCLING	1540-1	630	(700-1)

COPTER NDB RWY 34

SC-3, 28 NOV 2024 to 26 DEC 2024