

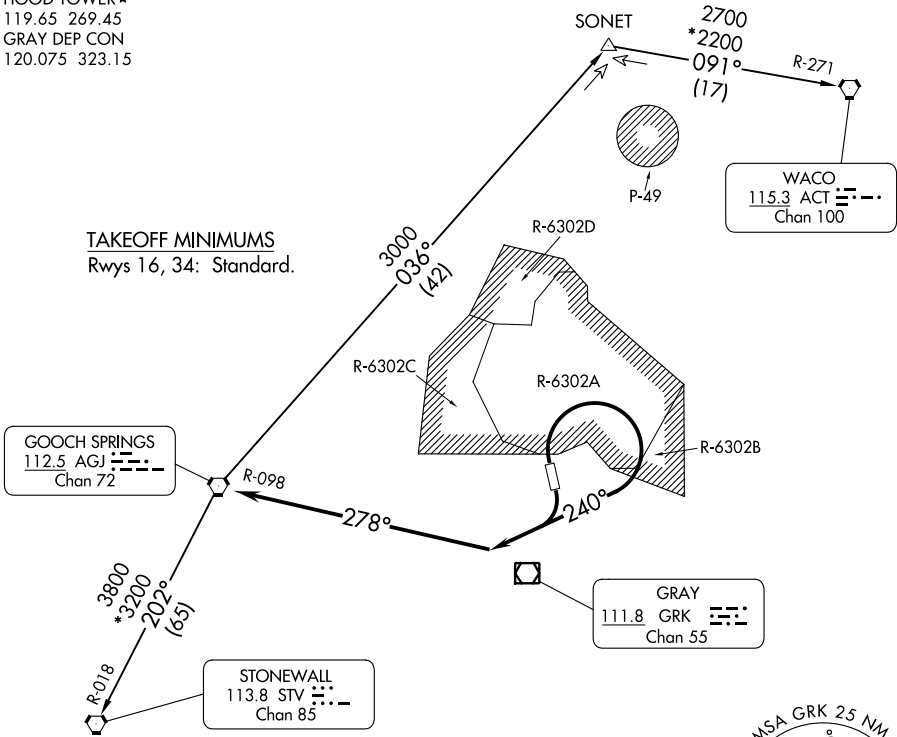
LAMPS EIGHT DEPARTURE

CLNC DEL
225.4
GND CON
133.85 225.4
HOOD TOWER★
119.65 269.45
GRAY DEP CON
120.075 323.15

RADAR required.

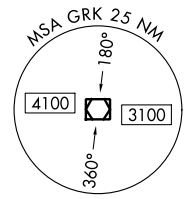
**TOP ALTITUDE:
ASSIGNED BY ATC**

TAKEOFF MINIMUMS
Rwys 16, 34: Standard.



NOTE: WACO TRANSITION for aircraft inbound to terminal area airports.

NOTE: Chart not to scale.



DEPARTURE ROUTE DESCRIPTION

TAKEOFF RUNWAYS 16, 34: Climbing right turn heading 240° (to assigned altitude) to intercept and proceed on AGJ R-098. Thence

. . . . on (transition) or (assigned route). Maintain ATC assigned altitude.

STONEWALL TRANSITION (LAMPS8.STV): From over AGJ VORTAC on AGJ R-202 and STV R-018 to STV VORTAC.

WACO TRANSITION (LAMPS8.ACT): From over AGJ VORTAC on AGJ R-036 to SONET INT, then on ACT R-271 to ACT VORTAC.