

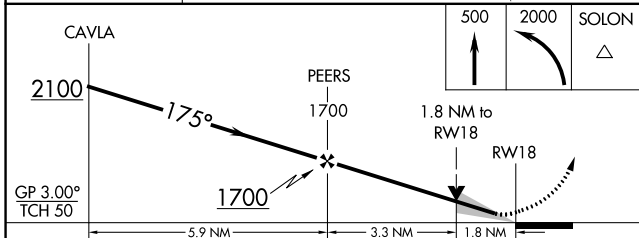
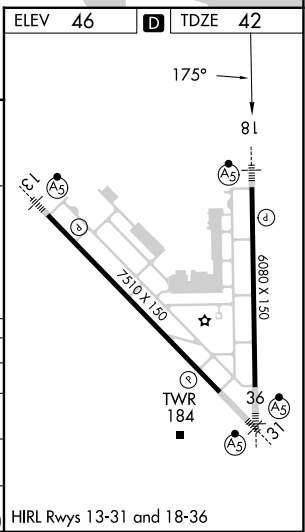
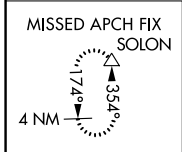
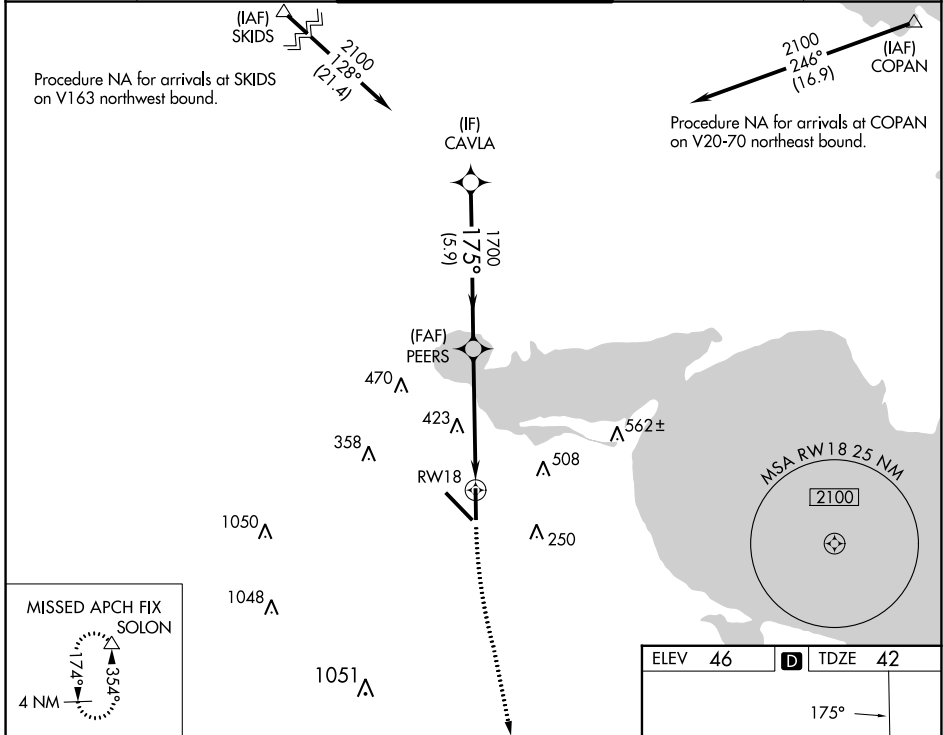
WAAS CH 53635 W18A	APP CRS 175°	Rwy Idg 6080 TDZE 42 Apt Elev 46
--	------------------------	---

RNAV (GPS) RWY 18

CORPUS CHRISTI INTL (CRP)

RNP APCH - GPS.	MALSRL 	MISSED APPROACH: Climb to 500 then climbing left turn to 2000 direct SOLON and hold.
<p>⚠ For uncompensated Baro-VNAV systems, LNAV/VNAV NA below 1°C or above 54°C. For inop ALS, increase LPV Cat E visibility to 3/4 SM, all LNAV/VNAV visibilities to 7/8 SM, and LNAV Cat C, D, and E visibility to 1 3/4 SM.</p>		

ATIS 126.8	CORPUS APP CON 120.9 348.725	CORPUS TOWER 119.4 257.8	GND CON 121.9 269.15	CLNC DEL 118.55
----------------------	--	------------------------------------	--------------------------------	---------------------------



CATEGORY	A	B	C	D	E
LPV DA		242-1/2	200 (200-1/2)		
LNAV/VNAV DA		345-1/2	303 (300-1/2)		
LNAV MDA	660-1/2	618 (700-1/2)	660-13/8	618 (700-13/8)	
C CIRCLING	660-1 614 (700-1)	780-1 734 (800-1)	820-21/4 774 (800-21/4)	820-21/2 774 (800-21/2)	820-23/4 774 (800-23/4)

HIRL Rwy 13-31 and 18-36

SC-3, 28 NOV 2024 to 26 DEC 2024

SC-3, 28 NOV 2024 to 26 DEC 2024