

LOC I-FLG <b>110.5</b>	APP CRS <b>214°</b>	Rwy Idg TDZE Apt Elev	<b>7000</b> <b>7003</b> <b>7014</b>
---------------------------	------------------------	-----------------------------	---

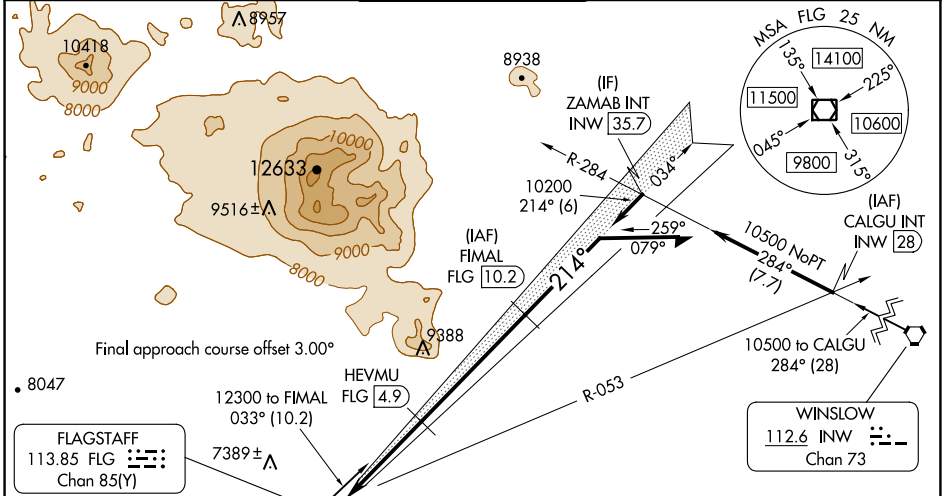
# ILS or LOC RWY 21

FLAGSTAFF PULLIAM (FLG)

**⚠ Autopilot coupled approach NA below 7640 feet. DME required. DME from FLG VOR/DME. Simultaneous reception of I-FLG and FLG DME required. For inop ALS increase S-ILS 21 all Cats visibility to ½.**

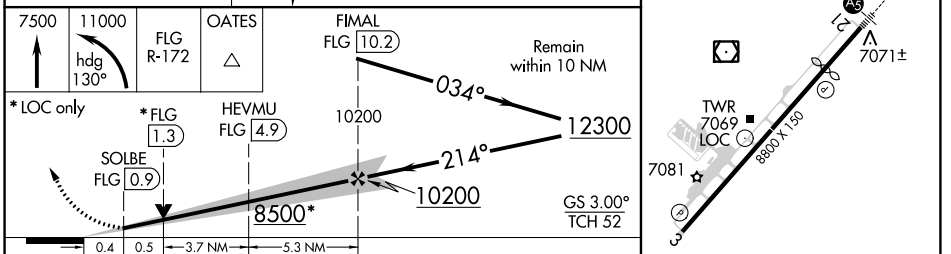
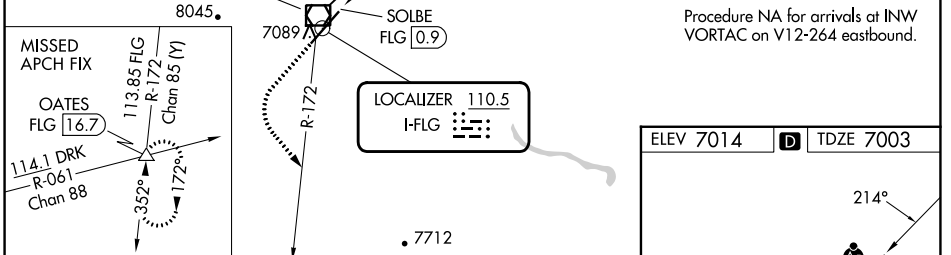
**MALSR**  MISSED APPROACH: Climb to 7500, then climbing left turn to 11000 on heading 130° and FLG R-172 to OATES INT/FLG VOR/DME 16.7 DME and hold, continue climb-in-hold to 11000.

ATIS <b>125.8</b>	PHOENIX APP CON <b>126.375 236.775</b>	FLAGSTAFF TOWER ★ <b>134.55 (CTAF) 0 239.25</b>	GND CON <b>121.9</b>	UNICOM <b>122.95</b>
----------------------	---	--	-------------------------	-------------------------



SW-4, 28 NOV 2024 to 26 DEC 2024

SW-4, 28 NOV 2024 to 26 DEC 2024



CATEGORY	A	B	C	D
S-ILS 21		7258-½	255 (300-½)	
S-LOC 21		7340-½	337 (400-½)	
CIRCLING	7520-1 506 (600-1)	7560-1 546 (600-1)	8100-3 1086 (1100-3)	8560-3 1546 (1600-3)