

WAAS CH <b>56313</b> <b>W12A</b>	APP CRS <b>124°</b>	Rwy Idg <b>4999</b> TDZE <b>8</b> Apt Elev <b>9</b>
--	------------------------	---

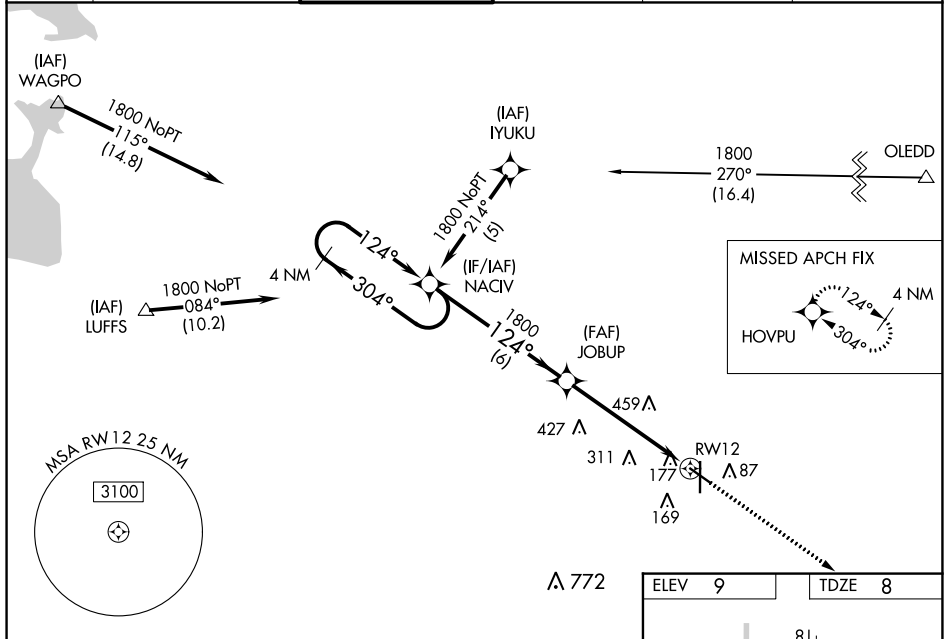
# RNAV (GPS) RWY 12

HOUMA-TERREBONNE (HUM)

**▼** For uncompensated Baro-VNAV systems, LNAV/VNAV NA below -15°C (5°F) or above 49°C (120°F). DME/DME RNP-0.3 NA. Visibility reduction by helicopters NA.  
**▲** When local altimeter setting not received, use Louis Armstrong New Orleans Intl altimeter setting: increase LPV DA to 370 feet and all visibilities 1/8 SM, increase LNAV/VNAV DA to 567 feet and all visibilities 1/4 SM; increase all MDAs 80 feet and visibility Cats B, C and D 1/4 SM. Baro-VNAV NA when using Louis Armstrong New Orleans Intl altimeter setting.

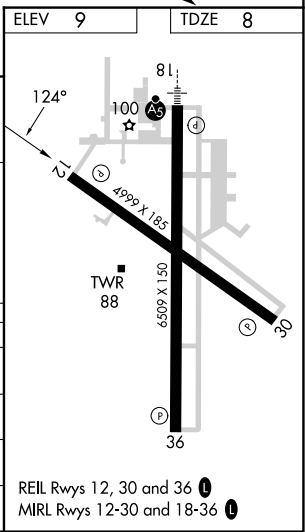
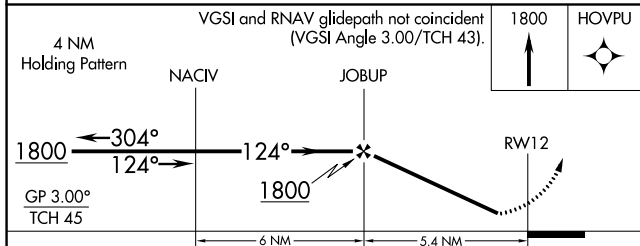
MISSED APPROACH: Climb to 1800 direct HOVPU and hold.

ATIS <b>120.25</b>	NEW ORLEANS APP CON <b>118.9 350.35</b>	HOUMA TOWER ★ <b>125.3 (CTAF) 0 346.3</b>	GND CON <b>123.875</b>	CLNC DEL <b>118.9</b> (When twr closed)	UNICOM <b>122.95</b>
-----------------------	--	--	---------------------------	---	-------------------------



SC-4, 28 NOV 2024 to 26 DEC 2024

SC-4, 28 NOV 2024 to 26 DEC 2024



CATEGORY	A	B	C	D
LPV DA		293-7/8	285 (300-7/8)	
LNAV/VNAV DA		490-13/8	482 (500-13/8)	
LNAV MDA	680-1	672 (700-1)	680-17/8	672 (700-17/8)
<b>C</b> CIRCLING	680-1	671 (700-1)	760-2 1/4 751 (800-2 1/4)	760-2 1/2 751 (800-2 1/2)