

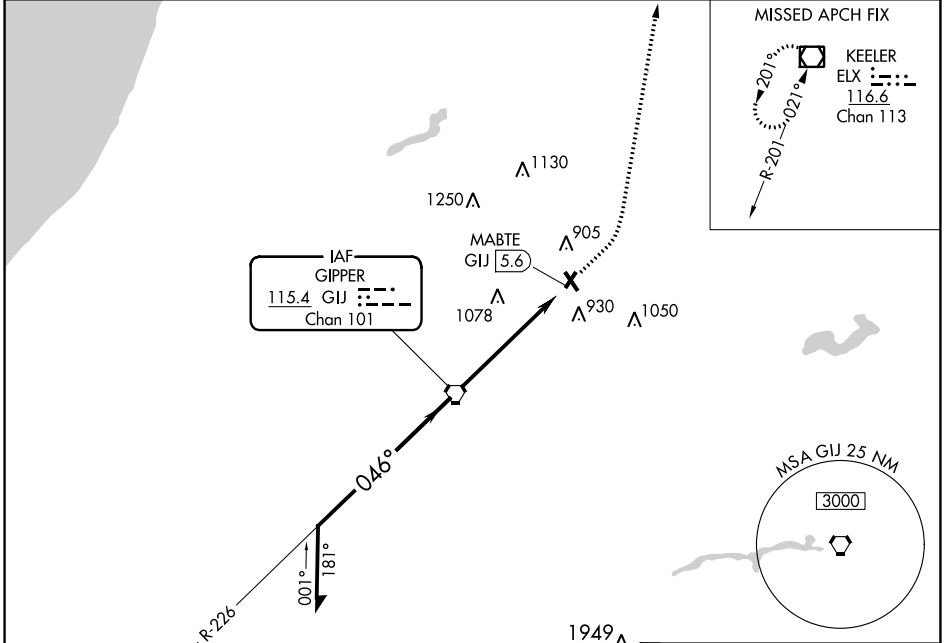
VORTAC GJJ <b>115.4</b> Chan 101	APP CRS <b>046°</b>	Rwy Idg TDZE Apt Elev	<b>N/A</b> <b>N/A</b> <b>750</b>
--	------------------------	-----------------------------	--

**VOR-A**  
JERRY TYLER MEML (3TR)

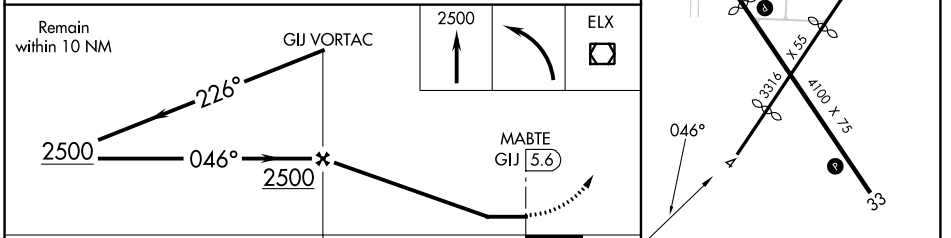
**NA** Use South Bend altimeter setting; when not received, use Elkhart altimeter setting and increase all MDA 20 feet. Procedure NA at night. Visibility reduction by helicopters NA.

MISSED APPROACH: Climb to 2500 then left turn direct ELX VOR/DME and hold.

SBN ASOS <b>120.675</b>	SOUTH BEND APP CON * <b>118.55 257.8</b>	GCO <b>121.725</b>	UNICOM <b>122.8</b> (CTAF) <b>1</b>
----------------------------	---	-----------------------	--



ELEV 750  
MIRL Rwy 15-33 **1**  
REIL Rwy 15 and 33 **1**



CATEGORY	A	B	C	D	FAF to MAP 5.6 NM					
CIRCLING	1300-1	550 (600-1)	1460-2 710 (800-2)	NA	Knots	60	90	120	150	180
					Min:Sec	5:36	3:44	2:48	2:14	1:52

EC-1, 28 NOV 2024 to 26 DEC 2024

EC-1, 28 NOV 2024 to 26 DEC 2024