

# HI-VOR or TACAN RWY 36

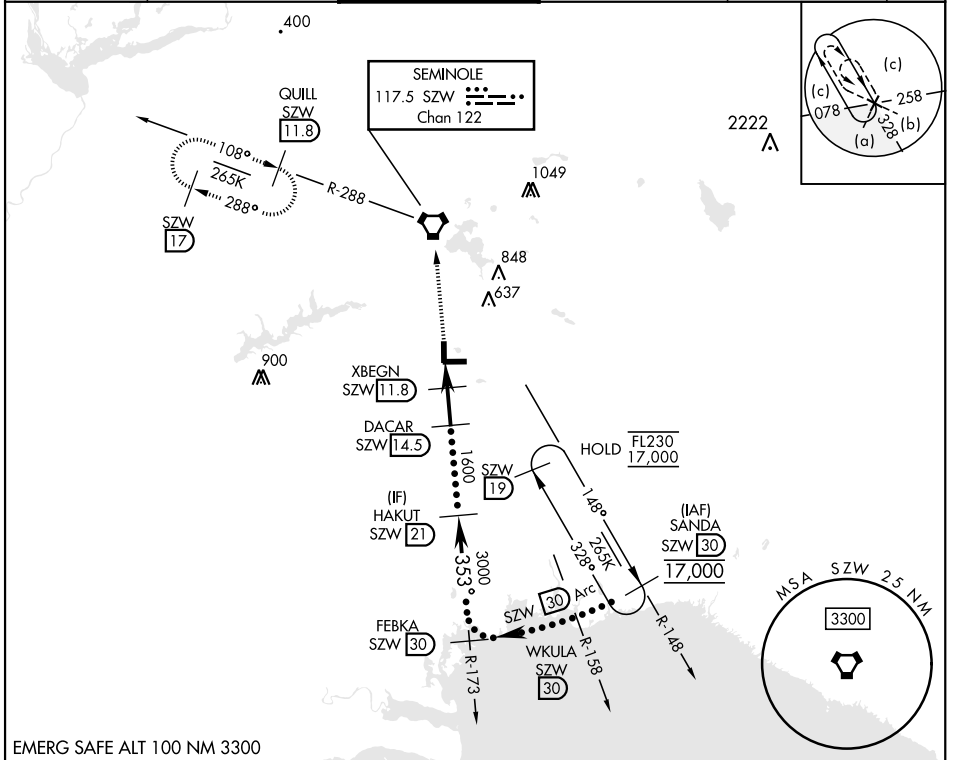
VORTAC SZW <b>117.5</b> Chan <b>122</b>	APCH CRS <b>353°</b>	Rwy Idg TDZE Arprt Elev <b>7000</b> <b>62</b> <b>83</b>	[USAF]	TALLAHASSEE INTL (KTLH)
---	-------------------------	--	--------	-------------------------

DME required. RADAR required for procedure entry.

**MALS** **AS**

**MISSED APPROACH:** Climb to 4000 direct SZW VORTAC then on R-288 to QUILL (SZW R-288/11.8 DME) and hold.

ATIS <b>119.45 239.25</b>	TALLAHASSEE APP CON <b>135.8 317.4</b>	TALLAHASSEE TOWER ★ <b>118.7 (CTAF) 0257.8</b>	GND CON <b>121.9 348.6</b>	CLNC DEL <b>126.65 275.8</b>	ASR
------------------------------	---	---	-------------------------------	---------------------------------	-----



4000	SZW	SZW R-288	HAKUT SZW 21
CATEGORY	C	D	E
S-36*	460/35	398 (400- $\frac{1}{2}$ )	
CIRCLING	640-1 $\frac{1}{2}$ 557 (600-1 $\frac{1}{2}$ )	800-2 $\frac{1}{4}$ 717 (800-2 $\frac{1}{4}$ )	1000-3 917 (1000-3)

ELEV	83	TDZE	62
HIRL Rwy 9-27, 18-36 REIL Rwy 9, 18 TDZL/CL Rwy 27			

# HI-VOR or TACAN RWY 36

SE-3, 28 NOV 2024 to 26 DEC 2024

SE-3, 28 NOV 2024 to 26 DEC 2024