

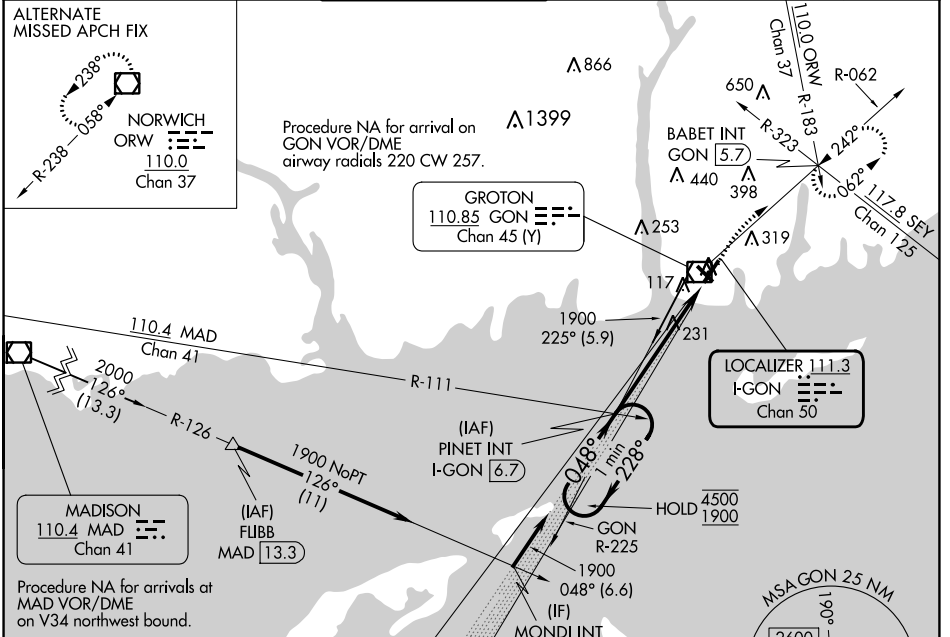
LOC/DME I-GON <b>111.3</b> Chan 50	APP CRS <b>048°</b>	Rwy Idg TDZE Apt Elev	<b>5000</b> <b>8</b> <b>9</b>
--	------------------------	-----------------------------	-------------------------------------

# ILS or LOC RWY 5

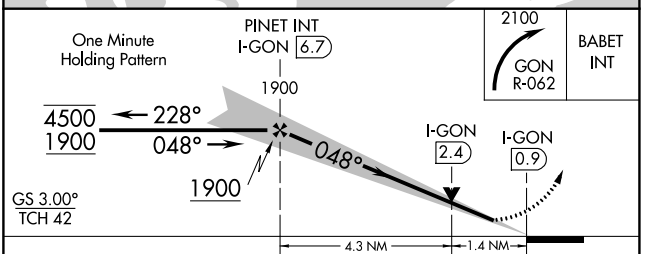
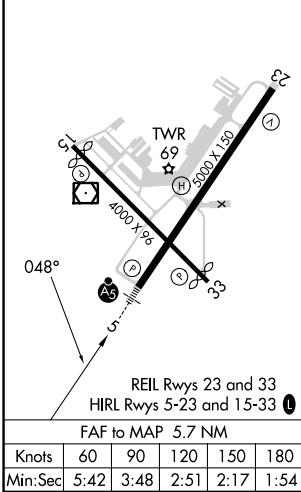
GROTON-NEW LONDON (GON)

<p><b>⚠</b> Circling Rwy 15 NA at night. For inop ALS, increase S-LOC Cat C/D visibility to 1 3/8. * RVR 1800 authorized with the use of FD or AP or HUD to DA.</p>	<p><b>MALSR</b></p>	<p><b>MISSED APPROACH:</b> Climbing right turn to 2100 on GON VOR/DME R-062 to BABET INT/GON 5.7 DME and hold, continue climb-in-hold to 2100.</p>
---	---------------------	--

ATIS <b>127.0</b>	PROVIDENCE APP CON * <b>125.75 319.2</b>	GROTON TOWER * <b>125.6 (CTAF) 0 236.775</b>	GND CON <b>121.65 236.775</b>	CLNC DEL <b>119.85</b> (when twr closed)	CLNC DEL <b>121.65</b>
----------------------	---	---	----------------------------------	--	---------------------------



ELEV 9	<b>D</b>	TDZE 8
--------	----------	--------



CATEGORY	A	B	C	D
S-ILS 5 *	208/24 200 (200-1/2)			
S-LOC 5	500/24	492 (500-1/2)	500/50	492 (500-1)
CIRCLING	580-1 571 (600-1)	620-1 611 (700-1)	700-2 691 (700-2)	840-2 3/4 831 (900-2 3/4)

NE-1, 28 NOV 2024 to 26 DEC 2024

NE-1, 28 NOV 2024 to 26 DEC 2024