

WAAS CH <b>77910</b> <b>W03A</b>	APP CRS <b>031°</b>	Rwy Idg TDZE Apt Elev	<b>6028</b> <b>1108</b> <b>1110</b>
--	------------------------	-----------------------------	---

# RNAV (GPS) RWY 3

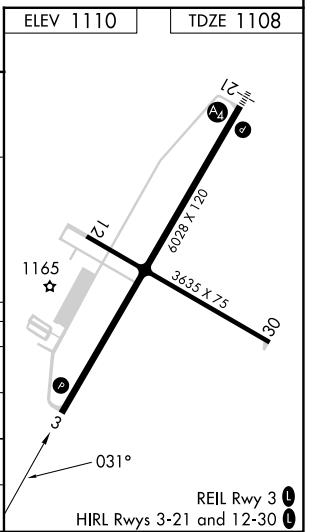
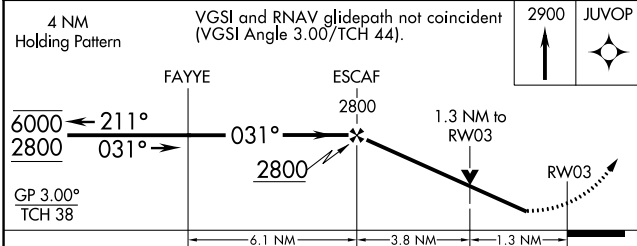
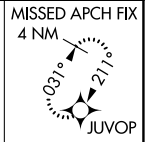
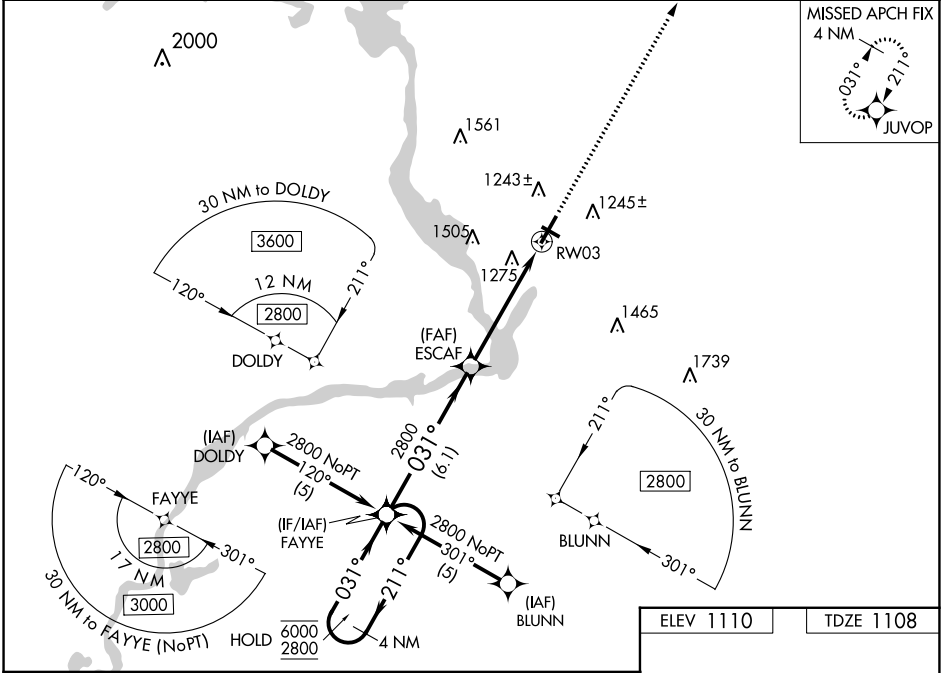
STEVENS POINT MUNI (STE)

RNP APCH - GPS.

**▼** Rwy 3 helicopter visibility reduction below 3/4 SM NA.  
**▲** For uncompensated Baro-VNAV systems, LNAV/VNAV NA below -17° C or above 54°C.

MISSED APPROACH:  
Climb to 2900 direct JUVOP and hold.

AWOS-3 <b>119.275</b>	MINNEAPOLIS CENTER <b>124.4 317.7</b>	UNICOM <b>122.7 (CTAF) 0</b>
--------------------------	--	---------------------------------



CATEGORY	A	B	C	D
LPV DA	1409-7/8 301 (300-7%)			
LNAV/VNAV DA	1594-13/8 486 (500-1%)			
LNAV MDA	1540-1	432 (500-1)	1540-1 1/4	432 (500-1 1/4)
<b>C</b> CIRCLING	1580-1 470 (500-1)	1600-1 490 (500-1)	1860-2 1/4 750 (800-2 1/4)	1860-2 1/2 750 (800-2 1/2)

EC-3, 28 NOV 2024 to 26 DEC 2024

EC-3, 28 NOV 2024 to 26 DEC 2024