

(ZETTR4.ZETTR) 24137

ZETTR FOUR DEPARTURE (RNAV)

AL-5052 (FAA)

OAKLAND COUNTY INTL (PTK)

PONTIAC, MICHIGAN

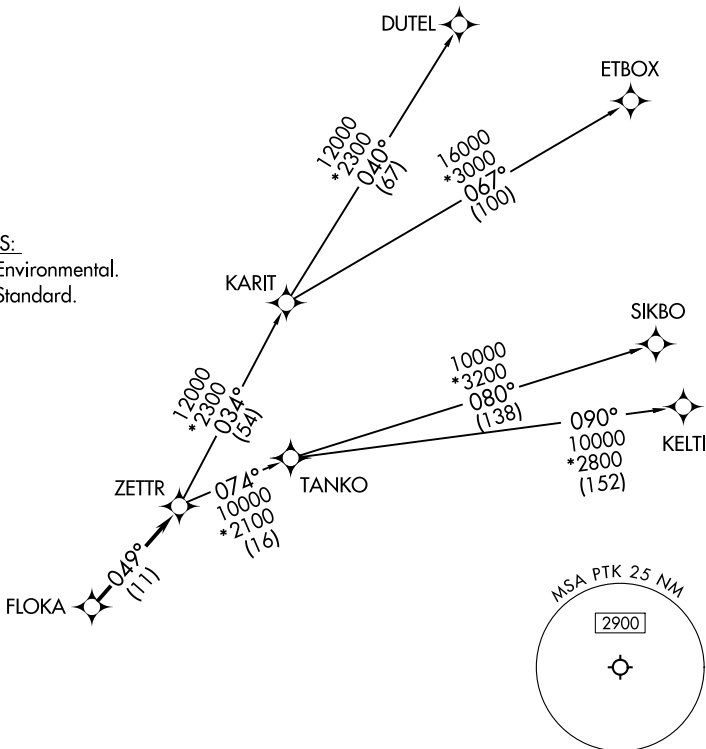
DETROIT DEP CON
132.35 284.0
ATIS
125.025
CLNC DEL
118.25
GND CON
121.9
PONTIAC TOWER ★
120.5 (CTAF)

RNAV 1 - DME/DME/IRU or GPS.
RADAR required.

**TOP ALTITUDE:
ASSIGNED BY ATC**

TAKEOFF MINIMUMS:

Rwys 18, 36: NA - Environmental.
Rwys 9L/R, 27L/R: Standard.



EC-1, 28 NOV 2024 to 26 DEC 2024

EC-1, 28 NOV 2024 to 26 DEC 2024



NOTE: Turbojet departures at/above 10000, maintain 280K until advised by ATC.
NOTE: TANKO Transition: For use by CYYZ area arrivals only, or as assigned by ATC.

NOTE: Chart not to scale.

DEPARTURE ROUTE DESCRIPTION

TAKEOFF RUNWAYS 9L/R: Climb on heading 095° or as assigned by ATC, thence....

TAKEOFF RUNWAYS 27L/R: Climb on heading 275° or as assigned by ATC, thence....

....for RADAR vectors to FLOKA, then on track 049° to ZETTR, then on (transition). Maintain ATC assigned altitude, expect filed altitude 10 minutes after departure.

DUTEL TRANSITION (ZETTR4.DUTEL):

ETBOX TRANSITION (ZETTR4.ETBOX):

KELTI TRANSITION (ZETTR4.KELTI):

SIKBO TRANSITION (ZETTR4.SIKBO):

TANKO TRANSITION (ZETTR4.TANKO):

ZETTR FOUR DEPARTURE (RNAV)
(ZETTR4.ZETTR) 16MAY24

PONTIAC, MICHIGAN
OAKLAND COUNTY INTL (PTK)