

LOC/DME I-TXN 111.55 Chan 52 (Y)	APP CRS 021°	Rwy Idg 8000 TDZE 867 Apt Elev 871
--	------------------------	---

ILS or LOC RWY 2

CENTRAL IL RGNL/BLOOMINGTON-NORMAL (BMI)

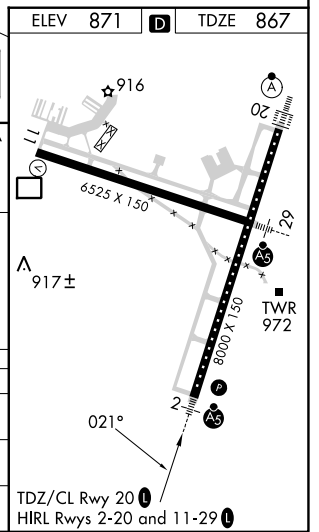
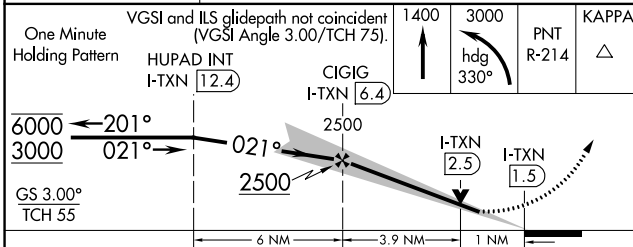
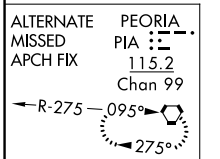
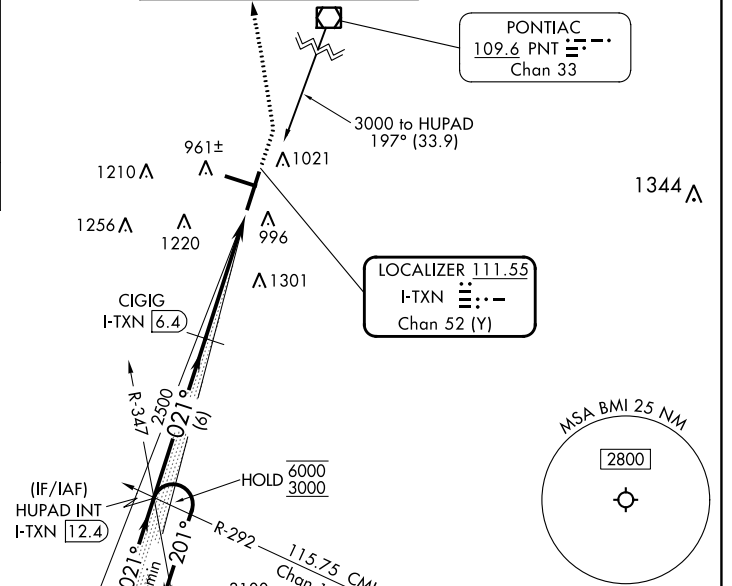
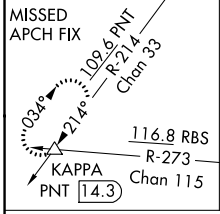
DME required for LOC only.

Autopilot coupled approach NA below 1100.
Inop table does not apply to S-ILS 2.
For inop ALS, increase S-LOC 2 Cat A/B visibility to RVR 5500 and Cat C/D visibility to RVR 6000.

MALSR

MISSED APPROACH: Climb to 3000 on heading 330° and on PNT VOR/DME R-214 to KAPPA INT/PNT 14.3 DME and hold.

ATIS 119.575	SAINT LOUIS APP CON 128.725 256.9	BLOOMINGTON TOWER ★ 124.6 (CTAF) 269.575	GND CON 121.65	UNICOM 122.95
------------------------	---	--	--------------------------	-------------------------



VGSI and ILS glidepath not coincident (VGSI Angle 3.00/TCH 75).	1400	3000	PNT R-214	KAPPA
HUPAD INT I-TXN 12.4	CIGIG I-TXN 6.4	hdg 330°		
6000 ← 201°	3000 → 021°	2500	2500	
GS 3.00° TCH 55		I-TXN 2.5	I-TXN 1.5	
	6 NM	3.9 NM	1 NM	
CATEGORY	A	B	C	D
S-ILS 2		1067/40	200 (200-¾)	
S-LOC 2		1260/40	393 (400-¾)	
CIRCLING	1340-1	469 (500-1)	1620-2¼ 749 (800-2¼)	1620-2½ 749 (800-2½)

ILS or LOC RWY 2

EC-3, 28 NOV 2024 to 26 DEC 2024

EC-3, 28 NOV 2024 to 26 DEC 2024