


LOC/DME I-BMI	APP CRS	Rwy Idg	6525
110.95	291°	TDZE	871
Chan 46 (Y)		Apt Elev	871

ILS or LOC RWY 29

CENTRAL IL RGNL/BLOOMINGTON-NORMAL (BMI)

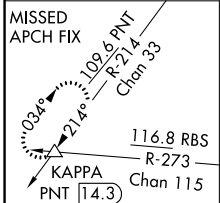
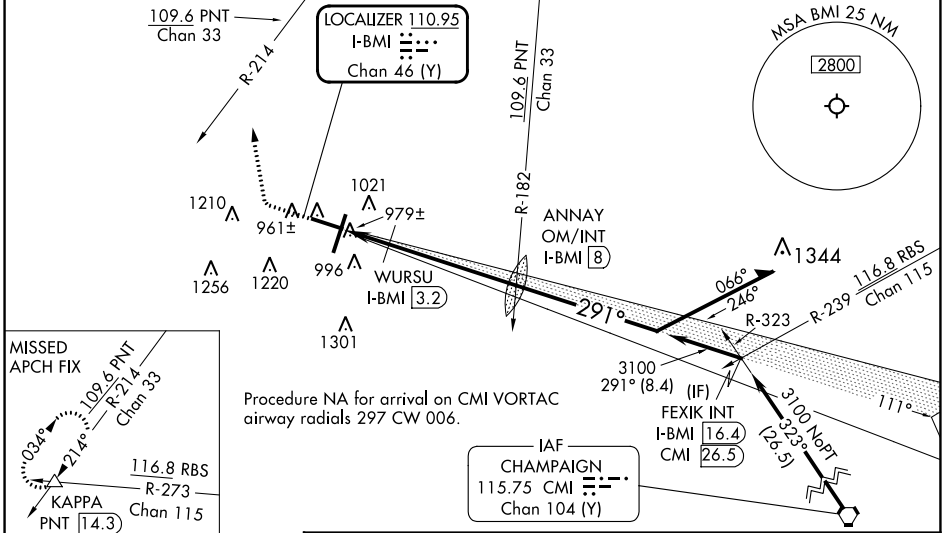
⚠ For inop ALS, increase S-LOC 29 Cats C and D visibility to 1 3/8 SM and WURSU fix minimums Cats C and D visibility to RVR 5500.
****RVR 1800 authorized with use of FD or AP or HUD to DA (NA when using General Downing-Peoria Intl altimeter setting).**

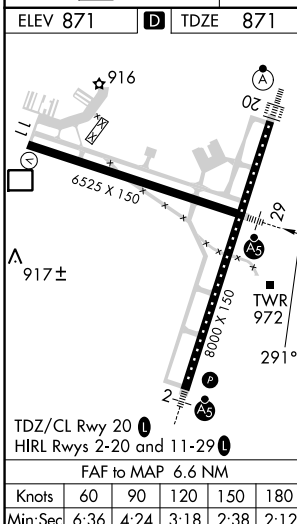
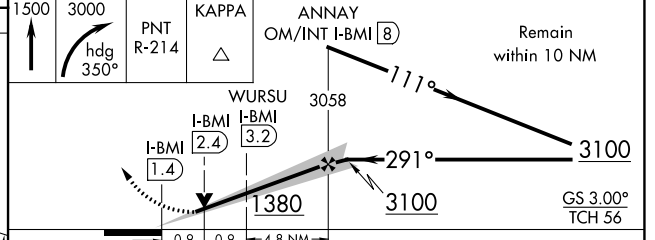
MALSR



MISSED APPROACH: Climb to 1500 then climbing right turn to 3000 on heading 350° and PNT VOR/DME R-214 to KAPPA INT/PNT 14.3 DME and hold.

ATIS 119.575	SAINT LOUIS APP CON 128.725 256.9	BLOOMINGTON TOWER * 124.6 (CTAF) 0 269.575	GND CON 121.65	UNICOM 122.95
------------------------	---------------------------------------------	------------------------------------------------------	--------------------------	-------------------------



ELEV 871	D	TDZE 871	1500	3000	PNT R-214	KAPPA	ANNAY OM/INT I-BMI 8	Remain within 10 NM	
									GS 3.00° TCH 56
CATEGORY		A	B	C	D				
S-LS 29 **		1071/24			200 (200-1/2)				
S-LOC 29		1380/24	509 (600-1/2)	1380/55		509 (600-1)			
C CIRCLING		1380-1	509 (600-1)	1620-2 1/4		749 (800-2 1/2)			
WURSU FIX MINIMUMS									
S-LOC 29		1240/24	369 (400-1/2)	1240/35		369 (400-5/8)			
C CIRCLING		1340-1	469 (500-1)	1620-2 1/4		749 (800-2 1/2)			

EC-3, 28 NOV 2024 to 26 DEC 2024

EC-3, 28 NOV 2024 to 26 DEC 2024