

LOC/DME I-BMI 110.95 Chan 46 (Y)	APP CRS 111°	Rwy Idg TDZE Apt Elev	6525 871 871
--	------------------------	-----------------------------	---

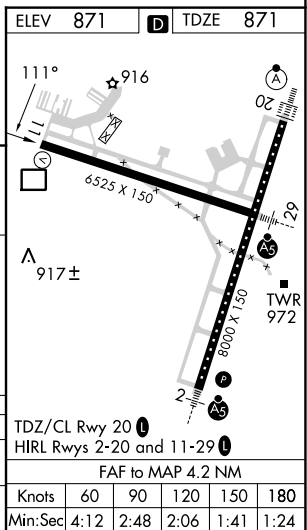
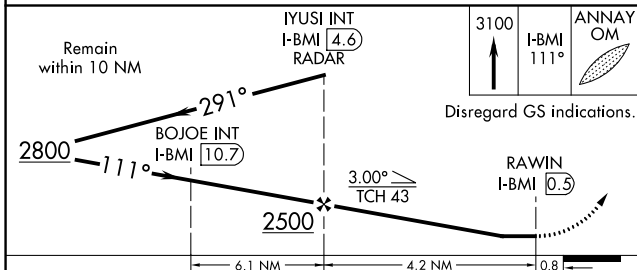
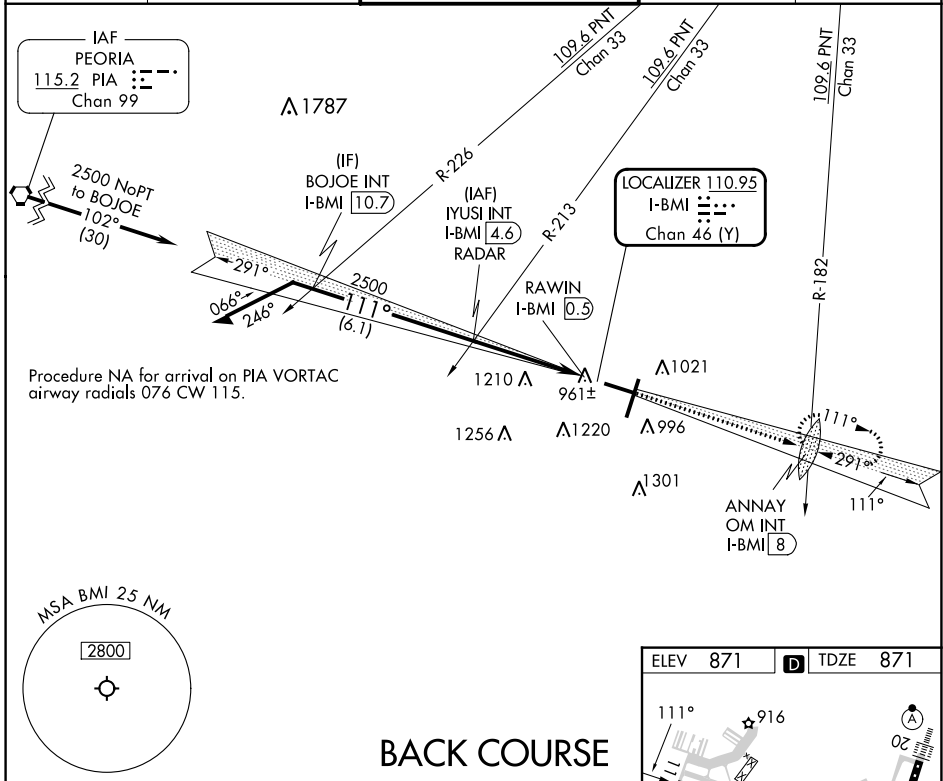
LOC BC RWY 11

CENTRAL IL RGNL/BLOOMINGTON-NORMAL (BMI)

RADAR required for procedure entry at IYUSI.

⚠ MISSED APPROACH: Climb to 3100 on I-BMI localizer SE course 111° to ANNAY OM INT/I-BMI 8 DME and hold, continue climb-in-hold to 3100.

ATIS 119.575	SAINT LOUIS APP CON 128.725 256.9	BLOOMINGTON TOWER * 124.6 (CTAF) 0 269.575	GND CON 121.65	UNICOM 122.95
------------------------	---	--	--------------------------	-------------------------



CATEGORY	A	B	C	D
S-LOC BC 11	1280-1	409 (500-1)	1280-1½	409 (500-1½)
C CIRCLING	1340-1	469 (500-1)	1620-2¼ 749 (800-2¼)	1620-2½ 749 (800-2½)

EC-3, 28 NOV 2024 to 26 DEC 2024

EC-3, 28 NOV 2024 to 26 DEC 2024