

WAAS CH 97709 W09A	APP CRS 089°	Rwy Idg TDZE Apt Elev	5503 385 387
--	------------------------	-----------------------------	---

RNAV (GPS) RWY 9

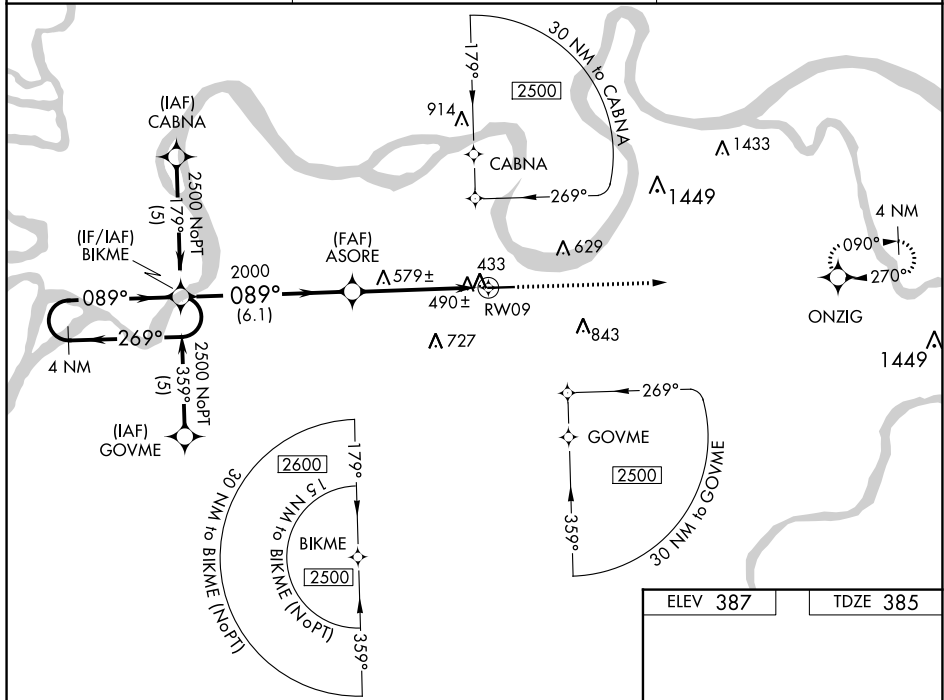
HENDERSON CITY-COUNTY (E.H.R.)

RNP APCH - GPS.

⚠ For uncompensated Baro-VNAV systems, LNAV/VNAV NA below -15°C or above 48° C.
⚠ Rwy 9 helicopter visibility reduction below 3/4 SM NA. Baro-VNAV and VDP NA when using Evansville altimeter setting. When local altimeter setting not received, use Evansville climeter setting and increase all DA 41 feet and all MDA 60 feet and LPV all Cats, LNAV/VNAV all Cats and LNAV Cats C/D visibilities 1/4 mile.

MISSED APPROACH:
Climb to 2500 direct ONZIG and hold.

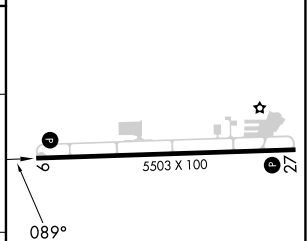
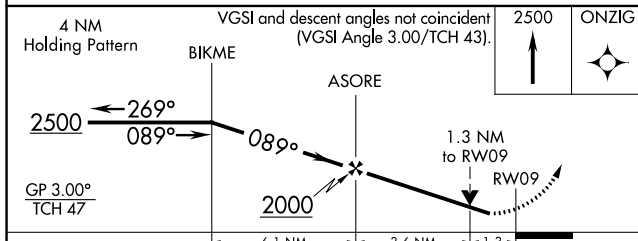
AWOS-3PT 118.85	EVANSVILLE APP CON ★ 124.025 257.8	UNICOM 122.8 (CTAF)
---------------------------	--	-------------------------------



SE-1, 28 NOV 2024 to 26 DEC 2024

SE-1, 28 NOV 2024 to 26 DEC 2024

ELEV 387	TDZE 385
----------	----------



CATEGORY	A	B	C	D
LPV DA	694-1 309 (400-1)			
LNAV/VNAV DA	774-1¼ 389 (400-1¼)			
LNAV MDA	840-1 455 (500-1)	840-1⅜ 455 (500-1⅜)	840-1½ 455 (500-1½)	840-1½ 455 (500-1½)

REIL Rwy 9 and 27 **ⓘ**
MIRL Rwy 9-27 **ⓘ**