

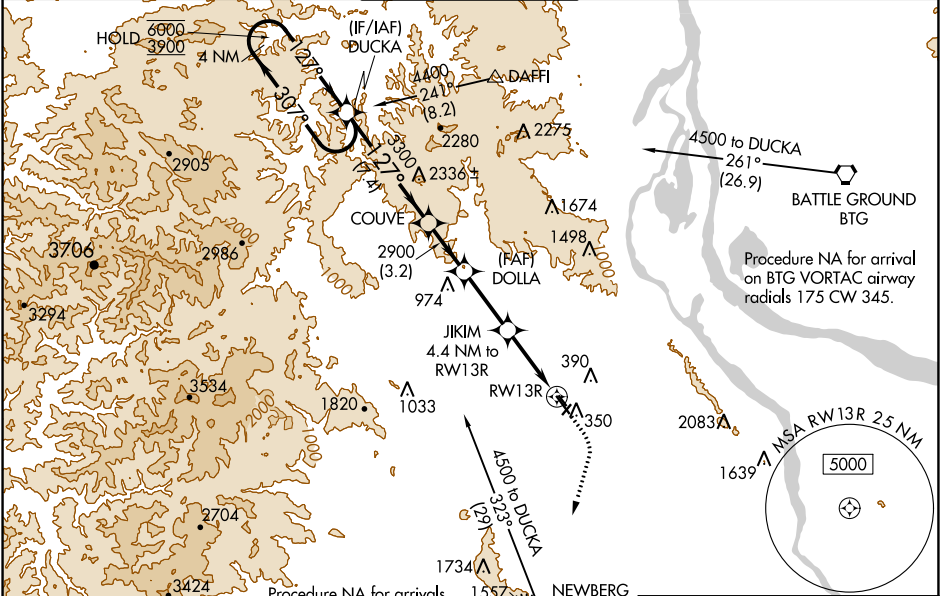
WAAS CH <b>69502</b> <b>W13A</b>	APP CRS <b>127°</b>	Rwy Idg TDZE Apt Elev	<b>6600</b> <b>203</b> <b>208</b>
--	------------------------	-----------------------------	---

# RNAV (GPS) RWY 13R

PORTLAND-HILLSBORO (HIO)

RNP APCH.	MALSR	MISSED APPROACH: Climb to 1000 then climbing right turn to 3000 direct UBG VOR/DME and hold. Continue climb-in-hold to 3000.
<p>⚠ Circling to Rwy 13L-31R NA at night. For uncompensated Baro-VNAV systems, LNAV/VNAV NA below -18°C or above 54°C. For inop ALS, increase LNAV Cat A/B visibility to RVR 5500 and Cat C/D to 1 3/8 SM.</p> <p># RVR 1800 authorized with use of FD or AP or HUD to DA.</p>		

ATIS <b>127.65</b>	PORTLAND APP CON <b>126.0 269.175</b>	HILLSBORO TOWER ★ <b>119.3 (CTAF) 239.3</b>	GND CON <b>121.7</b>	UNICOM <b>122.95</b>
-----------------------	--	--	-------------------------	-------------------------



NW-1, 28 NOV 2024 to 26 DEC 2024

NW-1, 28 NOV 2024 to 26 DEC 2024

ELEV 208	TDZE 203
----------	----------

4 NM Holding Pattern 6000 ← 307° 3900 → 127° GP 3.00° TCH 48	DUCKA	COUVE	DOLLA	JIKIM	UBG
				4.4 NM to RW13R	*LNNAV only.
		2900	*1660	*1.3 NM to RW13R	
	7.4 NM	3.2 NM	3.9 NM	3.1 NM	1.3 NM
CATEGORY	A	B	C	D	
LPV DA#		403/24	200 (200-1/2)		
LNAV/VNAV DA		661/45	458 (500-7/8)		
LNAV MDA	660/40	457 (500-3/4)	660/50	457 (500-1)	
CIRCLING	680-1 472 (500-1)	720-1 512 (600-1)	720-1 1/2 512 (600-1 1/2)	980-2 1/2 772 (800-2 1/2)	

