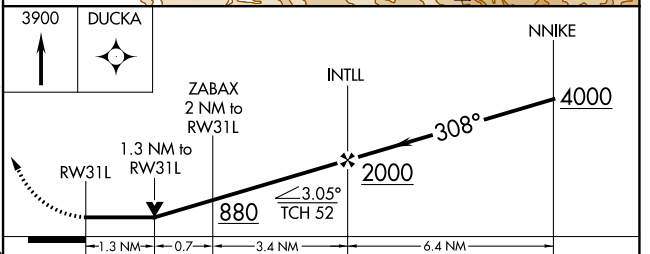
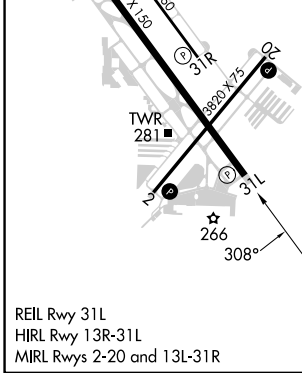
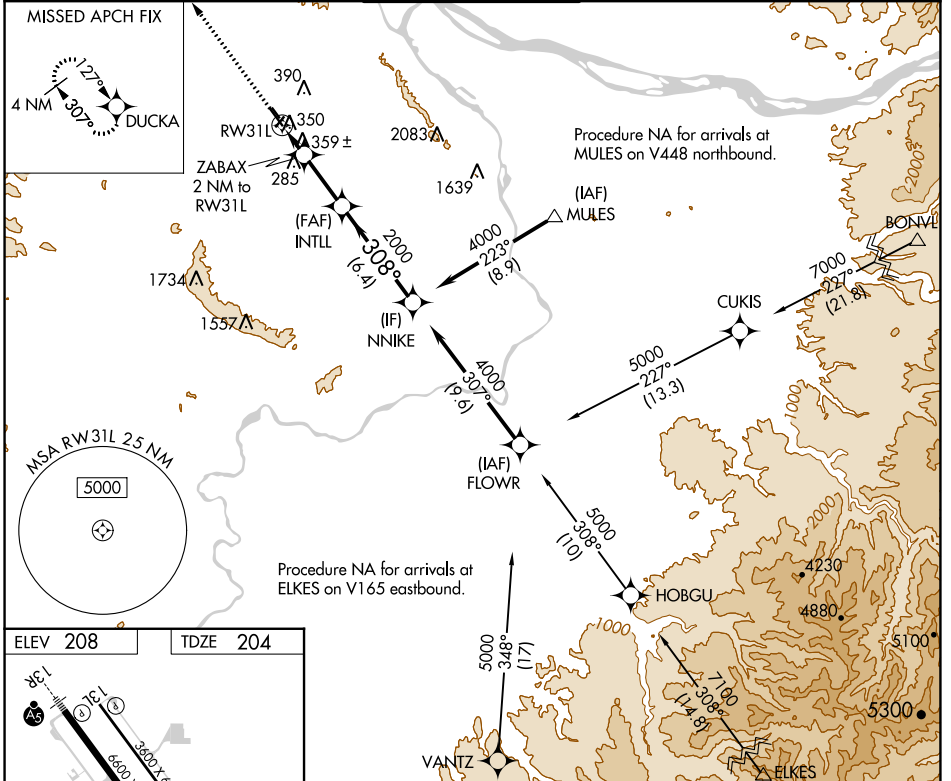


APP CRS	Rwy Idg	6600
308°	TDZE	204
	Apt Elev	208

RNAV (GPS) RWY 31L

PORTLAND-HILLSBORO (HIO)

RNP APCH.		MISSED APPROACH: Climb to 3900 direct DUCKA and hold.		
<p>▽ Circling to Rwy 13L, 31R NA at night. Rwy 31L helicopter visibility reduction below 3/4 SM NA.</p>				
ATIS	PORTLAND APP CON	HILLSBORO TOWER ★	GND CON	UNICOM
127.65	126.0 269.175	119.3 (CTAF) 0 239.3	121.7	122.95



CATEGORY	A	B	C	D
LNAV MDA	660-1	456 (500-1)	660-1 3/8	456 (500-1 3/8)
C CIRCLING	680-1	720-1	720-1 1/2	980-2 1/2
	472 (500-1)	512 (600-1)	512 (600-1 1/2)	772 (800-2 1/2)

NW-1, 28 NOV 2024 to 26 DEC 2024

NW-1, 28 NOV 2024 to 26 DEC 2024