

APP CRS	Rwy Idg	7201
252°	TDZE	2341
	Apt Elev	2351

RNAV (GPS) RWY 24

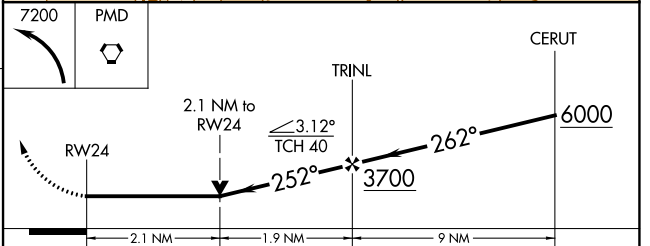
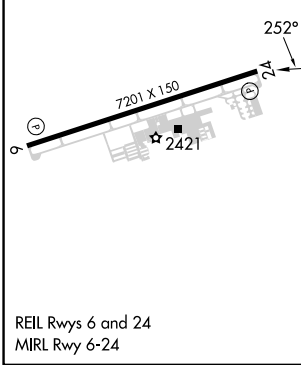
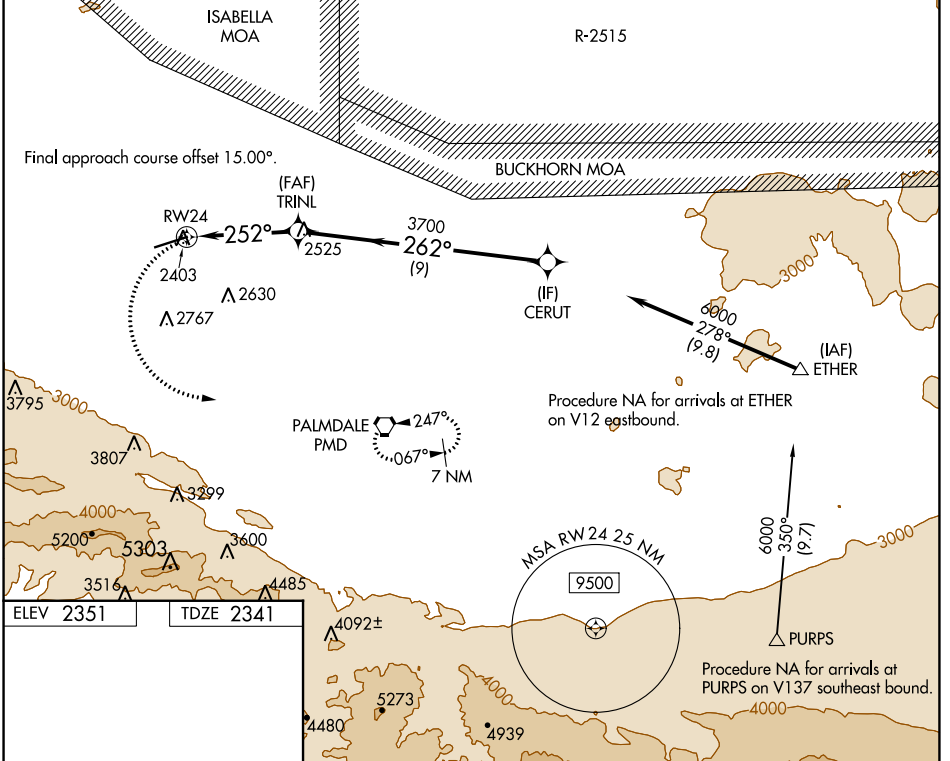
GENERAL WM J FOX AIRFIELD (WJF)

RNP APCH - GPS.

▼ Rwy 24 helicopter visibility reduction below 3/4 NA. VDP NA when using
 ▲ Palmdale altimeter setting. When local altimeter setting not received, use
 Palmdale altimeter setting and increase all MDAs 60 feet and LNAV
 visibility Cat C/D 1/8 SM, and Circling visibility Cat C/D 1/4 SM.

MISSED APPROACH: (Do not exceed 210K until
 PMD VORTAC) Climbing left turn to 7200 direct
 PMD VORTAC and hold, continue climb-in-hold
 7200.

ATIS 126.3	JOSHUA APP CON 126.1 290.3	FOX TOWER* 118.525 (CTAF) 256.9	GND CON 121.7 256.9	UNICOM 122.95
----------------------	--------------------------------------	---	-------------------------------	-------------------------



CATEGORY	A	B	C	D
LNAV MDA	3060-1	719 (800-1)	3060-2	719 (800-2)
CIRCLING	3060-1	709 (800-1)	3120-2 1/4 769 (800-2 1/4)	3120-2 1/2 769 (800-2 1/2)

SW-3, 28 NOV 2024 to 26 DEC 2024

SW-3, 28 NOV 2024 to 26 DEC 2024