

HI-TACAN X RWY 32L

TACAN NLC Chan 80	APCH CRS 322°	Rwy Idg TDZE Arpt Elev 13,501 227 228
-----------------------------	-------------------------	---

AL-5067 [USN]

LEMOORE NAS (REEVES FIELD) (KNLC)

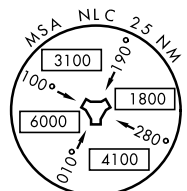
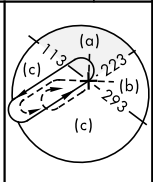
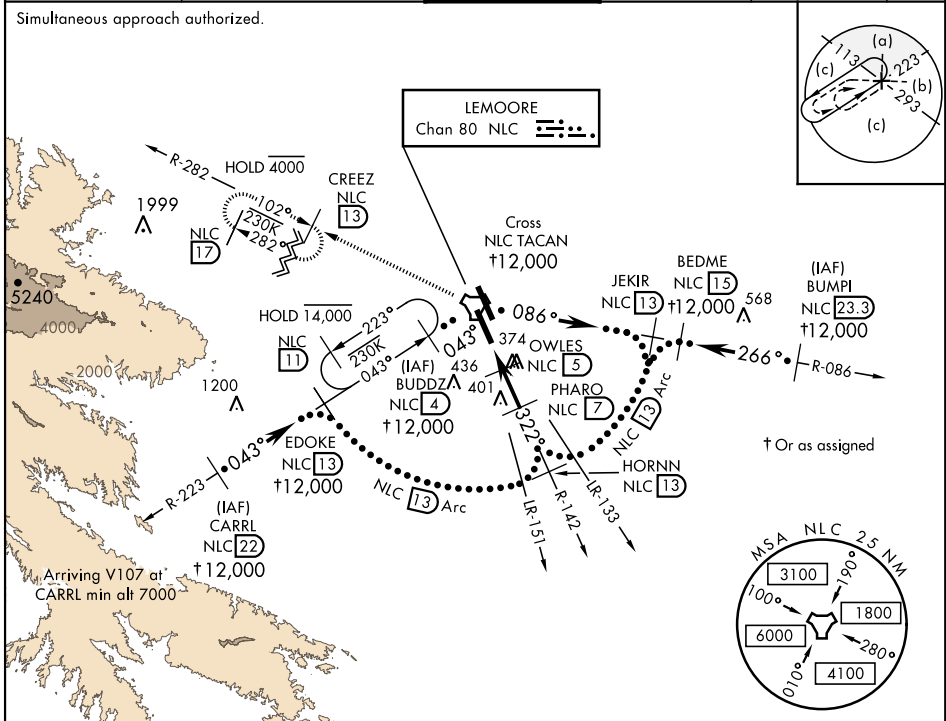
▲ * When ALS inop, increase CAT CDE vis to 1 mile.



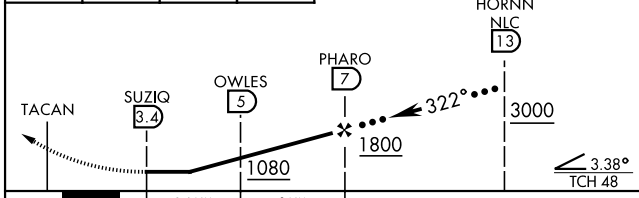
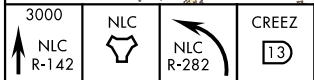
MISSED APPROACH: Climb to 3000 via R-142 to NLC TACAN, then via R-282 to CREEZ and hold.

ATIS★ 121.575 327.15	APP CON 124.1 269.025 (N) 118.15 269.025 (S)	TOWER★ 128.3 340.2	GND CON 121.65 305.2	CLNC DEL 124.1 371.9	ASR/ PAR
--------------------------------	--	------------------------------	--------------------------------	--------------------------------	-------------

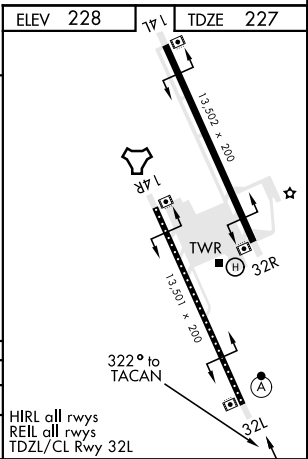
Simultaneous approach authorized.



EMERG SAFE ALT 100 NM 16,500



CATEGORY	C	D	E
S-32L *	580-5/8	353 (400-5/8)	
CIRCLING	700-1 1/2 472 (500-1 1/2)	780-2 552 (600-2)	



HI-TACAN X RWY 32L

SW-2, 28 NOV 2024 to 26 DEC 2024

SW-2, 28 NOV 2024 to 26 DEC 2024

HIRL all rwws
REIL all rwws
TDZL/CL Rwy 32L