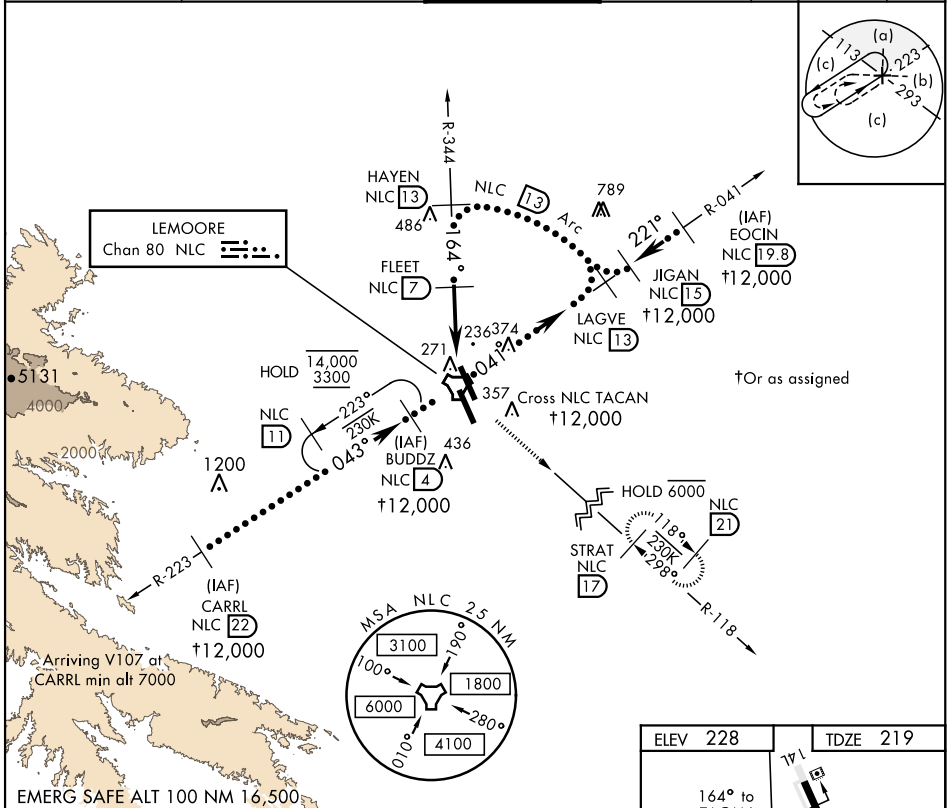


HI-TACAN Z RWY 14L

TACAN NLC Chan 80	APCH CRS 164°	Rwy Idg 13,502 TDZE 219 Arpt Elev 228	AL-5067 [USN]	LEMOORE NAS (REEVES FIELD) (KNLC)
-----------------------------	-------------------------	--	---------------	-----------------------------------

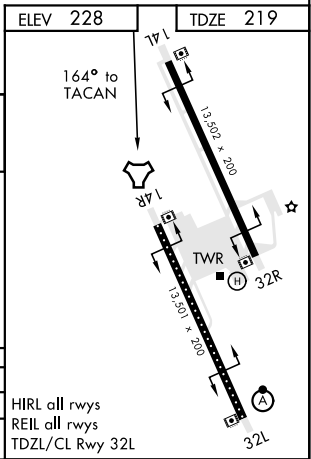
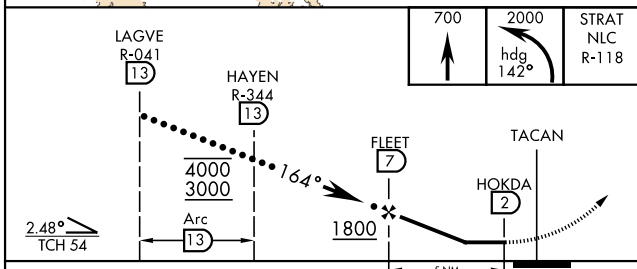
MISSED APPROACH: Climb to 700 then climbing left turn to 2000 via heading 142°, intercept NLC R-118 to STRAT and hold.

ATIS★ 121.575 327.15	APP CON 124.1 269.025 (N) 118.15 269.025 (S)	TOWER★ 128.3 340.2	GND CON 121.65 305.2	CLNC DEL 124.1 371.9	ASR/ PAR
--------------------------------	--	------------------------------	--------------------------------	--------------------------------	-------------



SW-2, 28 NOV 2024 to 26 DEC 2024

SW-2, 28 NOV 2024 to 26 DEC 2024



CATEGORY	C	D	E
S-14L	560-1	341	(400-1)
CIRCLING	700-1½ 452 (500-1½)	780-2	552 (600-2)

HIRL all rwy's
REIL all rwy's
TDZL/CL Rwy 32L

HI-TACAN Z RWY 14L