

RNAV (GPS) RWY 14R

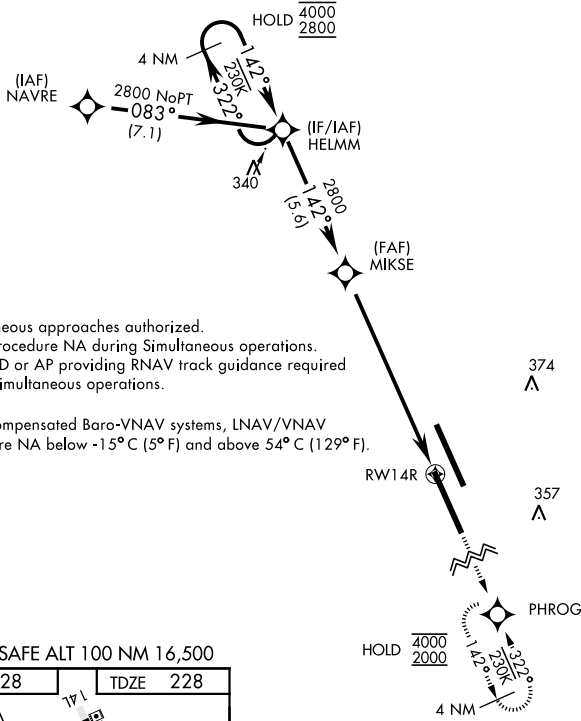
WAAS Chan 80286 W14B	APCH CRS 142°	Rwy Idg 13,501 TDZE 228 Arpt Elev 228
--	-------------------------	--

AL-5067 [USN]

LEMOORE NAS (REEVES FIELD) (KNLC)

▽ DME/DME RNP-0.3 NA	MISSED APPROACH: Climb to 1200, then climbing right turn to 2000 direct PHROG and hold.
-----------------------------	---

ATIS ★ 121.575 327.15	APP CON 124.1 269.025 (N) 118.15 269.025 (S)	TOWER ★ 128.3 360.2	GND CON 121.65 305.2	CLNC DEL 124.1 371.9	ASR/PAR
---------------------------------	--	-------------------------------	--------------------------------	--------------------------------	---------

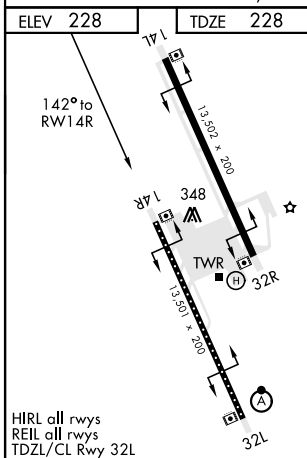


Simultaneous approaches authorized.
LNAV procedure NA during Simultaneous operations.
Use of FD or AP providing RNAV track guidance required during simultaneous operations.

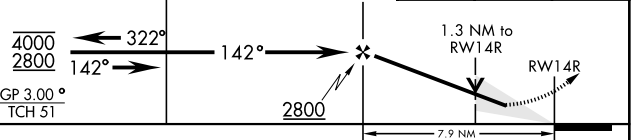
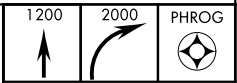
For uncompensated Baro-VNAV systems, LNAV/VNAV procedure NA below -15°C (5°F) and above 54°C (129°F).

1660

EMERG SAFE ALT 100 NM 16,500



HIRL all rws
REIL all rws
TDZL/CL Rwy 32L



CATEGORY	A	B	C	D
LPV DA		428-3/4	200 (200-3/4)	
LNAV/VNAV DA		483-3/4	255 (300-3/4)	
LNAV MDA	680-1	452 (500-1)	680-1 3/8	452 (500-1 3/8)
C CIRCLING	680-1	452 (500-1)	700-1 1/2	780-2
			472 (500-1 1/2)	552 (600-2)

RNAV (GPS) RWY 14R

SW-2, 28 NOV 2024 to 26 DEC 2024

SW-2, 28 NOV 2024 to 26 DEC 2024