

# RNAV (GPS) RWY 12

APCH CRS **122°**  
 Rwy ldg **10,000**  
 TDZE **4344**  
 Arprt Elev **4351**

[USA]

MICHAEL AAF (KDPG)

**NA** \* Obtain local altimeter setting on CTAF; when not received, use Wendover altimeter setting.  
 DME/DME RNP-0.3 NA.

**MISSED APPROACH:** Climb to 4760 then climbing right turn to 8500 direct ETUBY and hold, continue climb in hold to 8500.

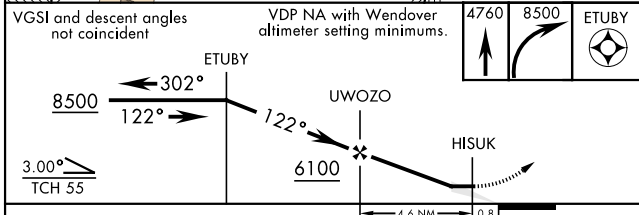
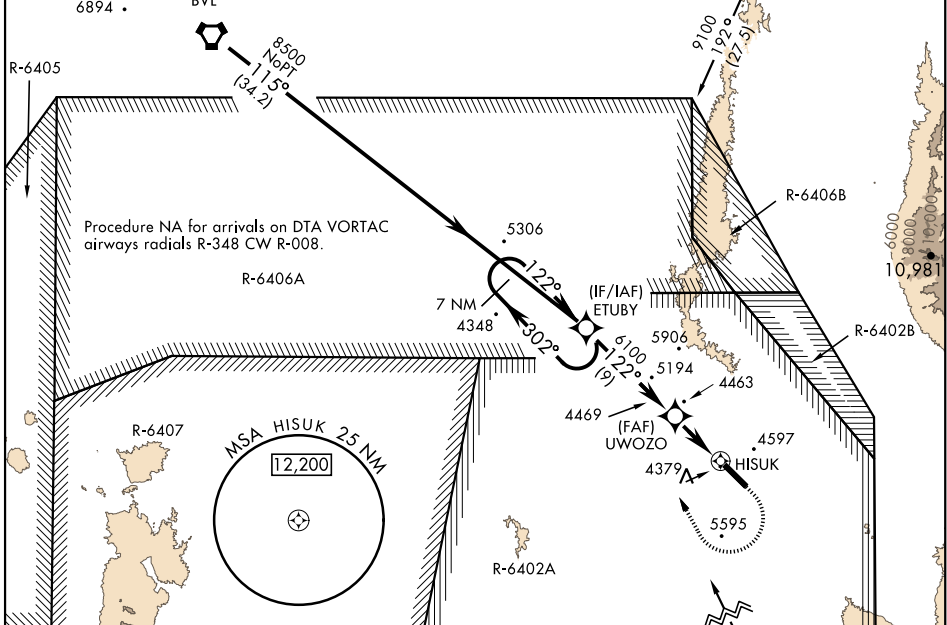
**CLOVER CON**  
**134.1 363.5**

**CTAF**  
**126.2 270.3**

Procedure lies within R-6402A, PPR. (IAF) BONNEVILLE BVL

Knots	60	120	180	240	300	360
V/V(fpm)	337	674	1011	1348	1685	2022

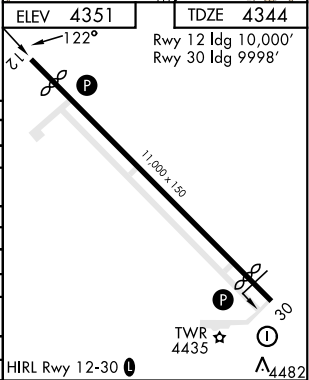
Min climb of 337 ft/NM to 6000 - Controlling Obstacle Unk



ELEV **4351** TDZE **4344**

Rwy 12 ldg 10,000'  
 Rwy 30 ldg 9998'

CATEGORY	A	B	C	D	E
LNAV MDA	4640-1 294 (300-1)		5140-2 1/2 794 (800-2 1/2)		
<b>C</b> CIRCLING	4800-1 449 (500-1)	4920-1 569 (600-1)	5160-2 1/2 809 (900-2 1/2)	5880-3 1529 (1600-3)	NA
BELOW MINIMA REQUIRES MISSED APPROACH CLIMB GRADIENT OF 337 ft/NM					
LNAV MDA	NA		4640-1 294 (300-1)		
* WENDOVER ALTIMETER SETTING MINIMUMS					
LNAV MDA	4800-1 454 (500-1)		5300-3 954 (1000-3)		
<b>C</b> CIRCLING	4960-1 609 (700-1)	5080-1 729 (800-1)	5320-3 969 (1000-3)	6040-3 1689 (1700-3)	NA
BELOW MINIMA REQUIRES MISSED APPROACH CLIMB GRADIENT OF 337 ft/NM					
LNAV MDA	NA		4800-3 454 (500-3)		



# RNAV (GPS) RWY 12

SW-4, 28 NOV 2024 to 26 DEC 2024

SW-4, 28 NOV 2024 to 26 DEC 2024