

TACAN RWY 12

TACAN Chan 79	MIJ	APCH CRS 117°	Rwy ldg 10,000' TDZE 4344' Arprt Elev 4351'
-------------------------	-----	-------------------------	--

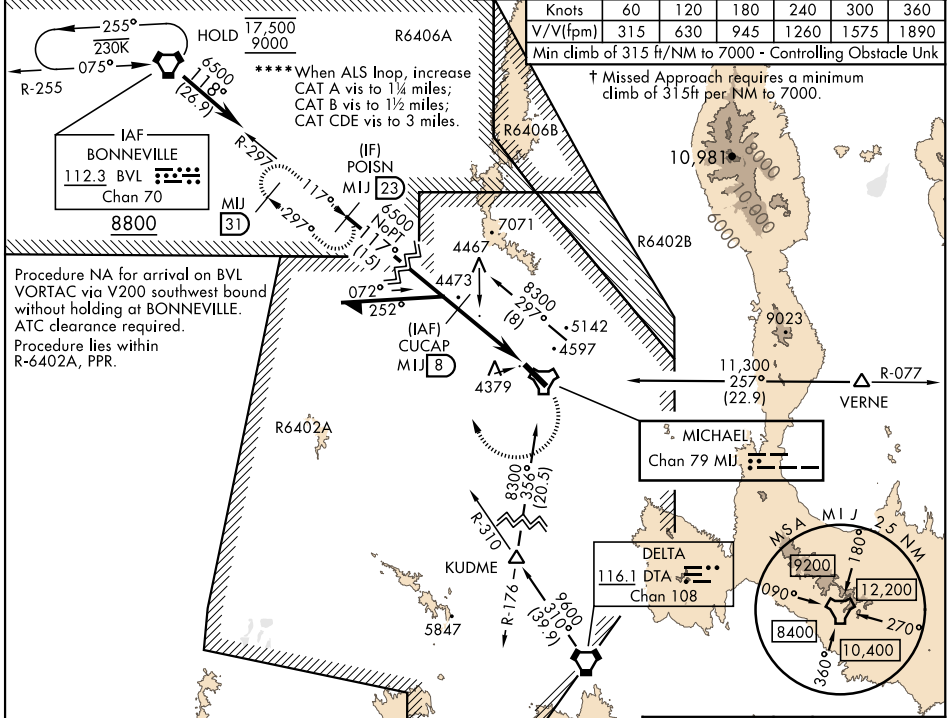
[USA]

MICHAEL AAF (KDPG)

▼ *When ALS Inop, increase CAT CDE vis to 1¾ miles.
 **When ALS Inop, increase CAT B vis to 1¼ miles;
 CAT CDE vis to 2½ miles.
 ***When ALS Inop, increase CAT CDE vis to 1¾ miles.

MISSED APPROACH: Climbing right turn to 8800 via MIJ TACAN R-297 to POISN/MIJ 23 DME and hold.

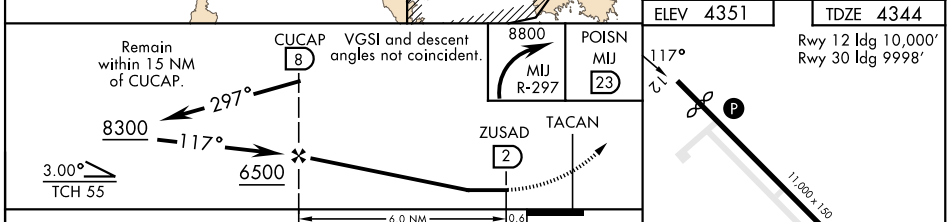
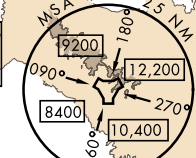
CLOVER CON 134.1 363.5	CTAF 126.2 270.3
----------------------------------	----------------------------



Procedure NA for arrival on BVL VORTAC via V200 southwest bound without holding at BONNEVILLE. ATC clearance required. Procedure lies within R-6402A, PPR.

MICHAEL Chan 79 MIJ

DELTA 116.1 DTA Chan 108



ELEV 4351	TDZE 4344
-----------	-----------

Rwy 12 ldg 10,000'
Rwy 30 ldg 9998'

CATEGORY	A	B	C	D	E
S-12*†	4800-1				
S-12**	5160-1	816 (900-1)	456	5160-2	816 (900-2)
☐ CIRCLING	5160-1 809 (900-1)	5160-1¼ 809 (900-1¼)	5160-2½ 809 (900-2½)	5880-3 1529 (1600-3)	6120-3 1769 (1800-3)
KENV - ENV (WENDOVER) ALTIMETER SETTING MINIMUMS					
S-12***†	4960-1	616 (700-1)	4960-1½	616	(700-1½)
S-12****	5320-1 976 (1000-1)	5320-1¼ 976 (1000-1¼)	5320-2½	976	(1000-2½)
☐ CIRCLING	5320-1¼ 969 (1000-1¼)	5320-1½ 969 (1000-1½)	5320-3 969 (1000-3)	6040-3 1689 (1700-3)	6280-3 1929 (2000-3)

HIRL Rwy 12-30

4435 ★ TWR
4482 ▲

TACAN RWY 12

SW-4, 28 NOV 2024 to 26 DEC 2024

SW-4, 28 NOV 2024 to 26 DEC 2024