

WAAS CH <b>53401</b> <b>W04A</b>	APP CRS <b>043°</b>	Rwy Idg TDZE Apt Elev	<b>4500</b> <b>2132</b> <b>2135</b>
--	------------------------	-----------------------------	---

# RNAV (GPS) RWY 4

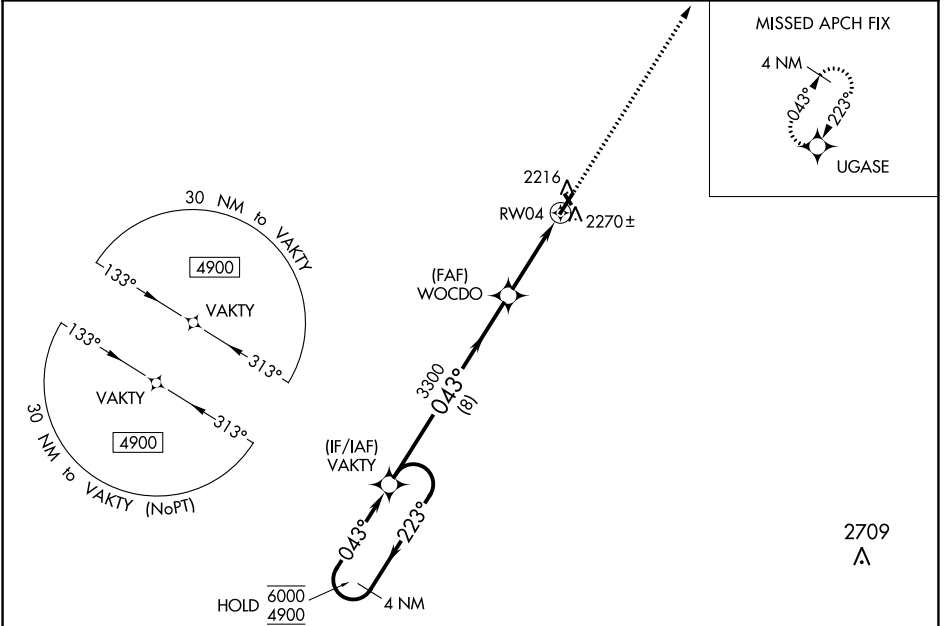
CATTARAUGUS COUNTY-OLEAN (OLE)

RNP APCH-GPS.

⚠ Circling NA to Rwys 16 and 34. Rwy 4 helicopter visibility reduction below 3/4 SM NA. When VGSI inop, Circling Rwy 22 NA at night. For uncompensated Baro-VNAV systems, LNAV/VNAV NA below -19°C or above 54°C.

MISSED APPROACH: Climb to 4500 direct UGASE and hold.

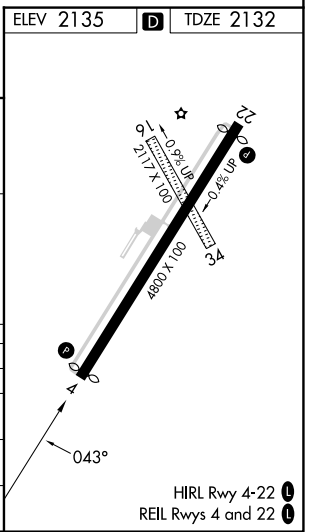
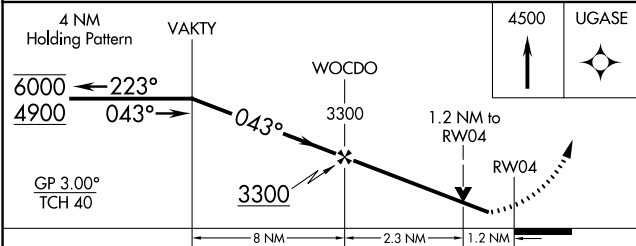
AWOS-3 <b>118.375</b>	CLEVELAND CENTER <b>124.325 353.85</b>	UNICOM <b>122.8 (CTAF) 1</b>
--------------------------	---	---------------------------------



NE-2, 28 NOV 2024 to 26 DEC 2024

NE-2, 28 NOV 2024 to 26 DEC 2024

ELEV 2135	<b>D</b>	TDZE 2132
-----------	----------	-----------



CATEGORY	A	B	C	D
LPV DA		2382-3/4	250 (300-3/4)	
LNAV/VNAV DA		2549-1 1/8	417 (500-1 1/8)	
LNAV MDA	2560-1	428 (500-1)	2560-1 1/4	428 (500-1 1/4)
<b>C</b> CIRCLING	2620-1	485 (500-1)	2680-1 1/2	2720-2
			545 (600-1 1/2)	585 (600-2)

HIRL Rwy 4-22 1  
REIL Rwys 4 and 22 1