

APP CRS	Rwy Idg	5849
270°	TDZE	906
	Apt Elev	911

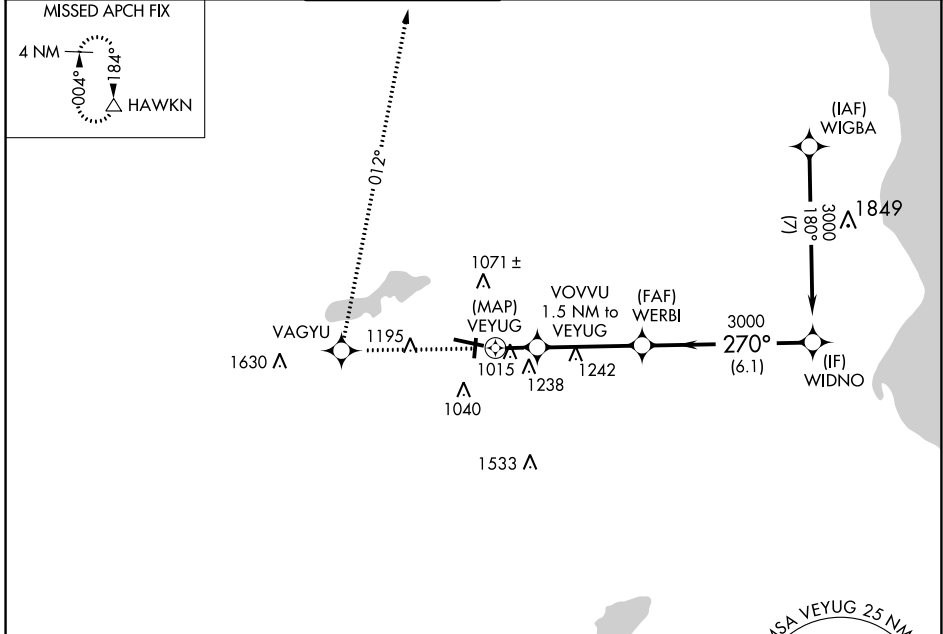
RNAV (GPS) RWY 28

WAUKESHA COUNTY (U/S)

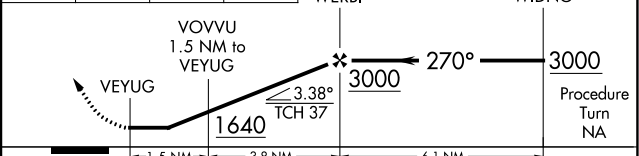
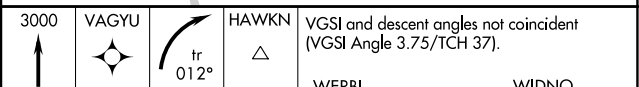
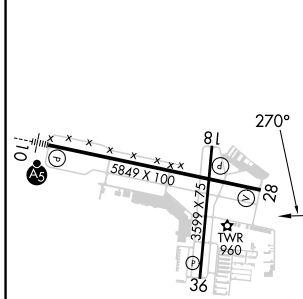
▽ DME/DME RNP-0.3 NA. Visibility reduction by helicopters NA. When local altimeter setting not received, use Lawrence J Timmerman altimeter setting and increase all MDA 60 feet, increase Circling Cat C and D visibility ¼ mile.

△ MISSED APPROACH: Climb to 3000 direct VAGYU and right turn via 012° track to HAWKN and hold.

ATIS 118.875	MILWAUKEE APP CON 125.35 307.0	WAUKESHA TOWER ★ 123.7 (CTAF) 0	GND CON 121.6	CLNC DEL 121.6	CLNC DEL 128.7 (When twr closed)	UNICOM 122.95
------------------------	--	---	-------------------------	--------------------------	---	-------------------------



ELEV 911	TDZE 906
----------	----------



CATEGORY	A	B	C	D
LNAV MDA	1420-1	514 (600-1)	1420-1½ 514 (600-1½)	1420-1¾ 514 (600-1¾)
CIRCLING	1460-1 549 (600-1)	1500-1 589 (600-1)	1540-1¾ 629 (700-1¾)	1640-2¼ 729 (800-2¼)

- HIRL Rwy 10-28
- MIRL Rwy 18-36
- REIL Rwy 18, 28 and 36

EC-3, 28 NOV 2024 to 26 DEC 2024

EC-3, 28 NOV 2024 to 26 DEC 2024