

MERIDIAN, MISSISSIPPI

HI-ILS X or LOC/DME X RWY 19L

LOC/DME I-NMM 109.7 Chan 34	APCH CRS 191°	Rwy ldg TDZE Arprt Elev 8000 316 316
---	-------------------------	--

AL-5079 [USN]

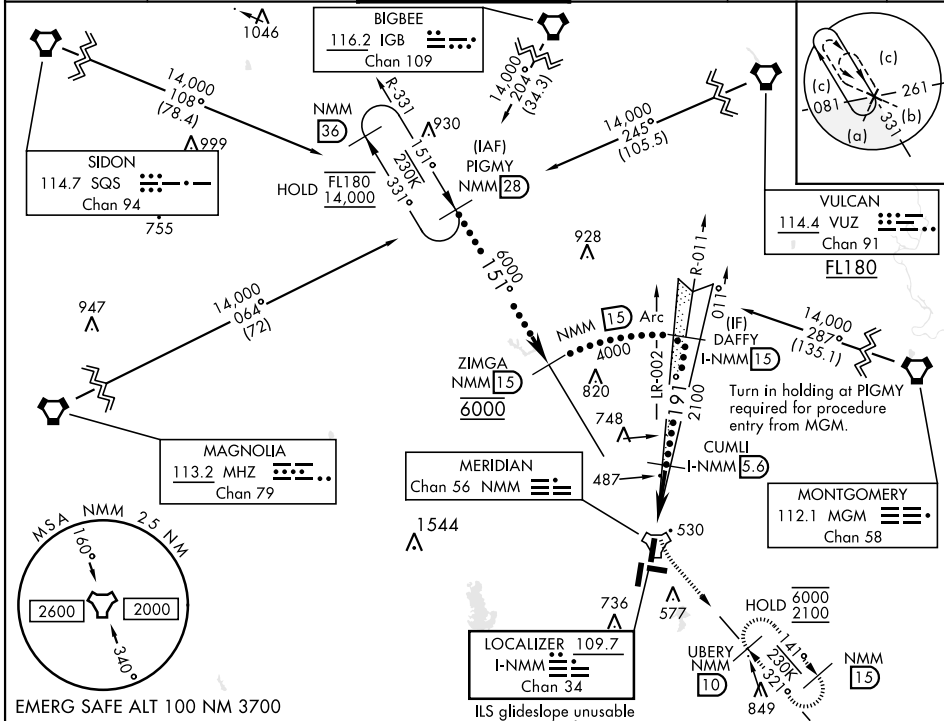
MERIDIAN NAS (MC CAIN FIELD) (KNMM)

*When ALS inop, increase vis to ¾ mile.
 **When ALS inop, increase vis to 1¼ miles.



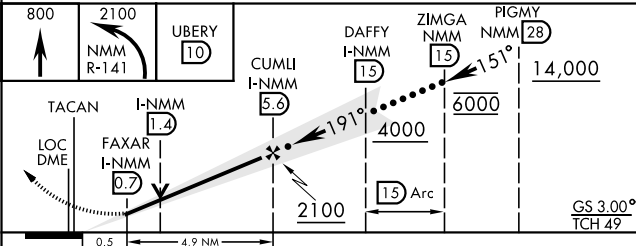
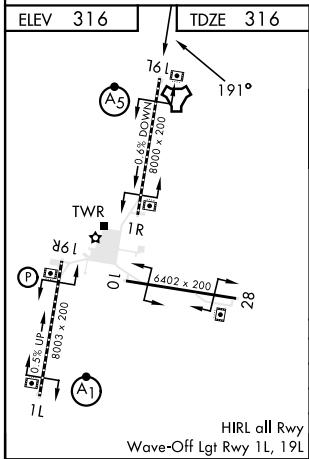
MISSED APPROACH: Climb to 800 then climbing left turn to 2100 intercept NMM R-141 to UBERY and hold.

ATIS ★ 290.525	APP CON 120.95 276.4	NAVY MC CAIN TOWER ★ 126.2 340.2	GND CON 336.4	CLNC DEL 301.0	ASR/ PAR
--------------------------	--------------------------------	--	-------------------------	--------------------------	-------------



Turn in holding at PIGMY required for procedure entry from MGM.

ILS glideslope unusable beyond 6° left of centerline.



CATEGORY	C	D	E
S-ILS 19L *	516-½	200	(200-½)
S-LOC 19L**	740-¾	424	(500-¾)
CIRCLING	840-1½ 524 (600-1½)	880-2 564 (600-2)	1080-2¾ 764 (800-2¾)

MERIDIAN, MISSISSIPPI

32° 33' N - 88° 33' W

MERIDIAN NAS (MC CAIN FIELD) (KNMM)

Orig 01DEC22

HI-ILS X or LOC/DME X RWY 19L

SC-4, 28 NOV 2024 to 26 DEC 2024

SC-4, 28 NOV 2024 to 26 DEC 2024