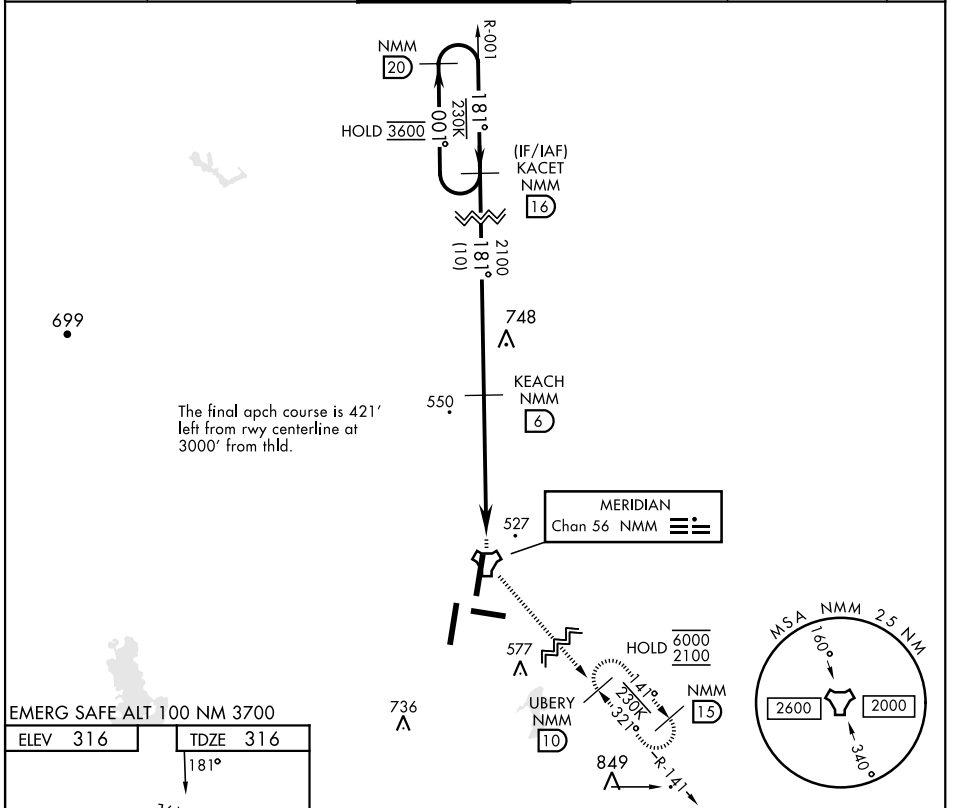


TACAN Y RWY 19L

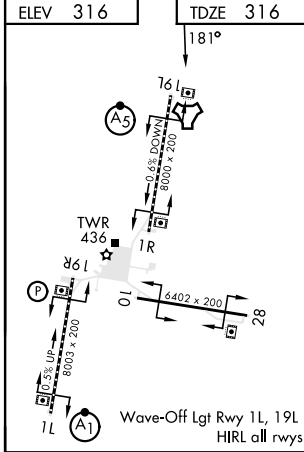
| | | | | |
|---|----------------------|--|---------------|---|
| TACAN NMM Chan 56 | APCH CRS 181° | Rwy Idg TDZE 316 Arprt Elev 316 | AL-5079 [USN] | MERIDIAN NAS (MC CAIN FIELD) (KNMM) |
| RADAR required. | | | MALSR | MISSED APPROACH: Climb to 2100 direct NMM TACAN then via R-141 to UBERY and hold. |
| * When ALS inop, increase CAT AB vis to 1 mile; CDE vis to 1/8 miles. | | | | |

| | | | | | |
|-----------------------|-----------------------------|---|----------------------|-----------------------|---------|
| ATIS ★ 290.525 | APP CON 120.95 276.4 | NAVY MC CAIN TOWER ★ 126.2 340.2 | GND CON 336.4 | CLNC DEL 301.0 | ASR/PAR |
|-----------------------|-----------------------------|---|----------------------|-----------------------|---------|



The final apch course is 421' left from rwy centerline at 3000' from thld.

EMERG SAFE ALT 100 NM 3700



This diagram shows the transition from the KEACH (NMM 6) fix to the TACAN (07) station. The path starts at 2100 feet, turns 181° to 3600 feet, then 181° to 2100 feet. A 2.83° turn is indicated, leading to a turn of 5.3 NM to the TACAN station. The TACAN station is located 0.5 NM from the end of the runway.

| CATEGORY | A | B | C | D | E |
|----------|----------------------|----------------------|------------------------------|----------------------|-------------------------------|
| S-19L * | 800-1/2 484 | (500-1/2) | 800-1 | 484 | (500-1) |
| CIRCLING | 820-1 504 (600-1) | 840-1 524 (600-1) | 840-1 1/2 524 (600-1 1/2) | 880-2 564 (600-2) | 1080-2 3/4 764 (800-2 3/4) |

TACAN Y RWY 19L

SC-4, 28 NOV 2024 to 26 DEC 2024

SC-4, 28 NOV 2024 to 26 DEC 2024