

APP CRS <b>302°</b>	Rwy Idg TDZE Apt Elev	<b>2539</b> <b>104</b> <b>106</b>
------------------------	-----------------------------	---

# RNAV (GPS) RWY 30

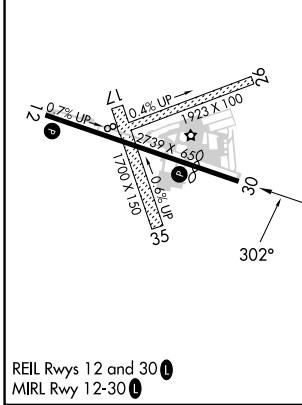
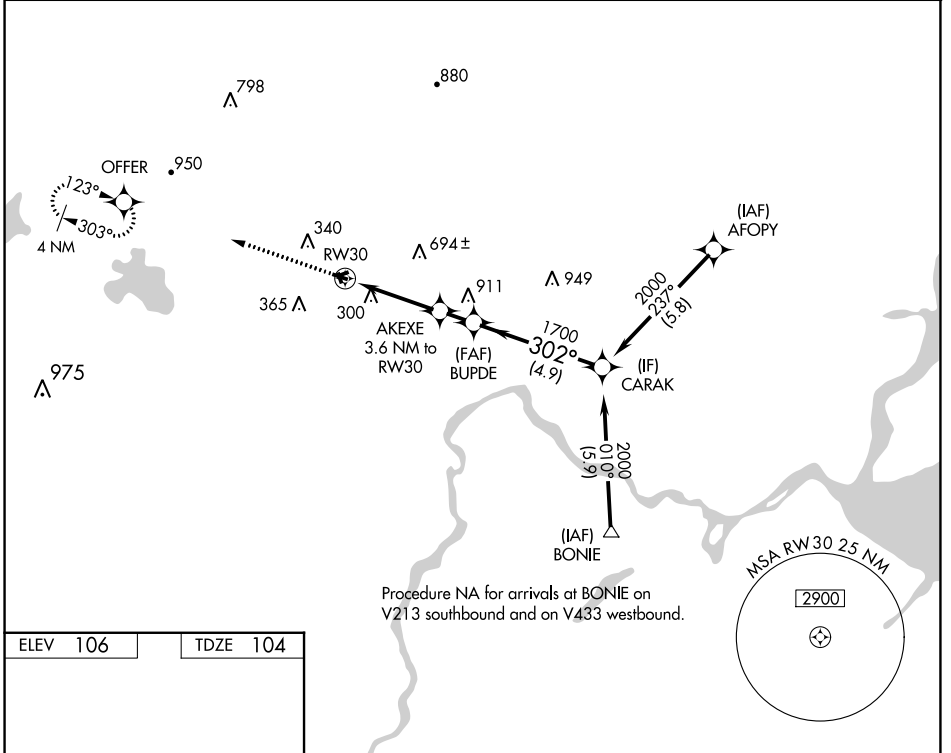
SOMERSET (SMQ)

RNP APCH - GPS.

**⚠** Rwy 30 helicopter visibility reduction below 1 SM NA. Circling Rwy 8, 17, 26, 30 and 35 NA at night. Straight-in Rwy 30 NA at night.

MISSED APPROACH: Climb to 2500 direct OFFER and hold.

ASOS <b>120.6</b>	NEWARK APP CON <b>132.8 379.9</b>	UNICOM <b>123.0 (CTAF)</b>	<b>118.325 0</b>
----------------------	--------------------------------------	-------------------------------	------------------



2500	OFFER	Visual Segment - Obstacles.				
<table border="1"> <tr> <td>3.6 NM</td> <td>1.3 NM</td> <td>4.9 NM</td> <td></td> </tr> </table>			3.6 NM	1.3 NM	4.9 NM	
3.6 NM	1.3 NM	4.9 NM				
CATEGORY	A	B	C	D		
LNAV MDA	960-1 856 (900-1)	960-1¼ 856 (900-1¼)	NA			
<b>C</b> CIRCLING	960-1¼	854 (900-1¼)	NA			

NE-2, 28 NOV 2024 to 26 DEC 2024

NE-2, 28 NOV 2024 to 26 DEC 2024