

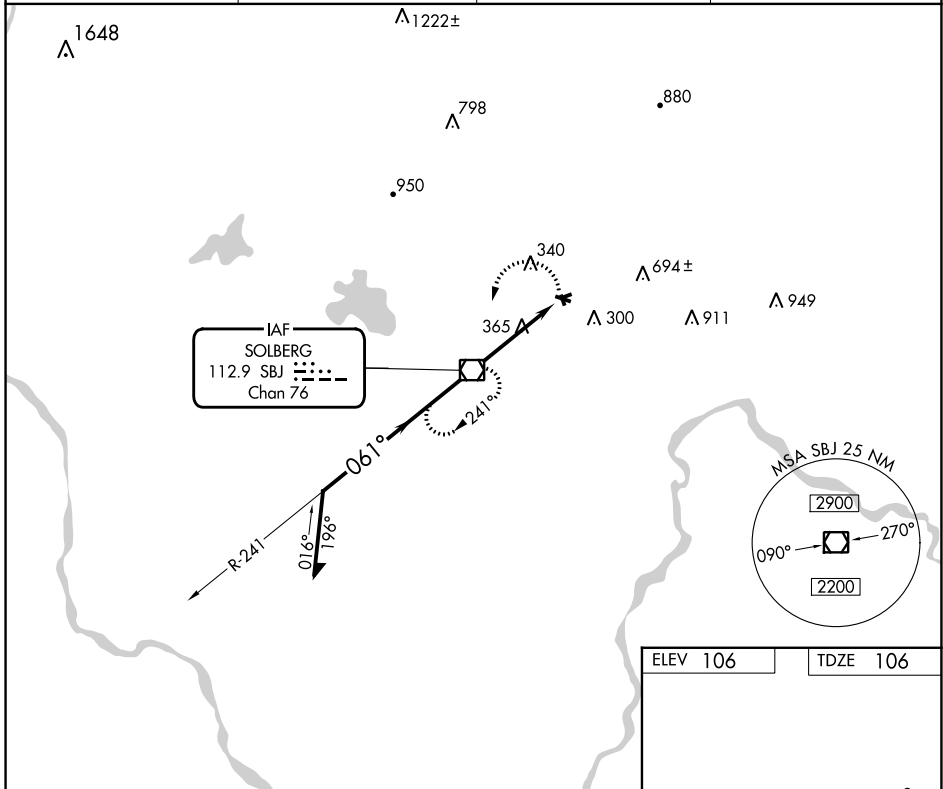
VOR/DME SBJ 112.9 Chan 76	APP CRS 061°	Rwy Idg 1923 TDZE 106 Apt Elev 106
---	------------------------	---

VOR RWY 8

SOMERSET (SMQ)

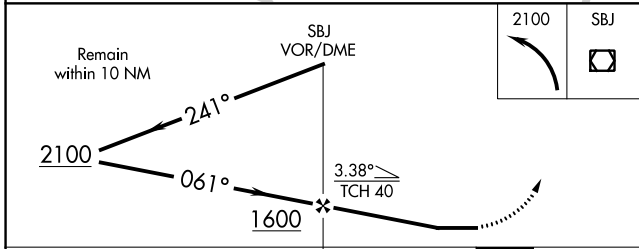
<p>⚠ Circling Rwy 8, 17, 26, 30 and 35 NA at night. Rwy 8 helicopter visibility reduction below 1 SM NA. Straight-in Rwy 8 NA at night.</p>	<p>MISSED APPROACH: Climbing left turn to 2100 direct SBJ VOR/DME and hold.</p>
---	---

ASOS 120.6	NEWARK APP CON 132.8 379.9	UNICOM 123.0 (CTAF)	118.325 0
----------------------	--------------------------------------	-------------------------------	------------------

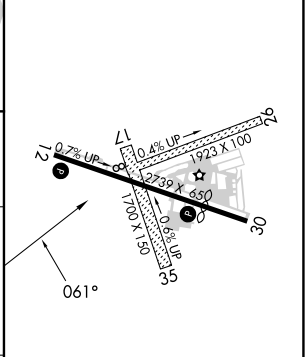


NE-2, 28 NOV 2024 to 26 DEC 2024

NE-2, 28 NOV 2024 to 26 DEC 2024



ELEV 106	TDZE 106
----------	----------



CATEGORY	A	B	C	D
S-8	700-1	594 (600-1)		NA
C CIRCLING	700-1 594 (600-1)	960-1¼ 854 (900-1¼)		NA

REIL Rwys 12 and 30				
MIRL Rwy 12-30				
FAF to MAP 4.1 NM				
Knots	60	90	120	150 180
Min:Sec	4:06	2:44	2:03	1:38 1:22