

WAAS CH 53512 W10A	APP CRS 104°	Rwy Idg TDZE Apt Elev	4001 1057 1074
--	------------------------	-----------------------------	---

RNAV (GPS) Z RWY 10

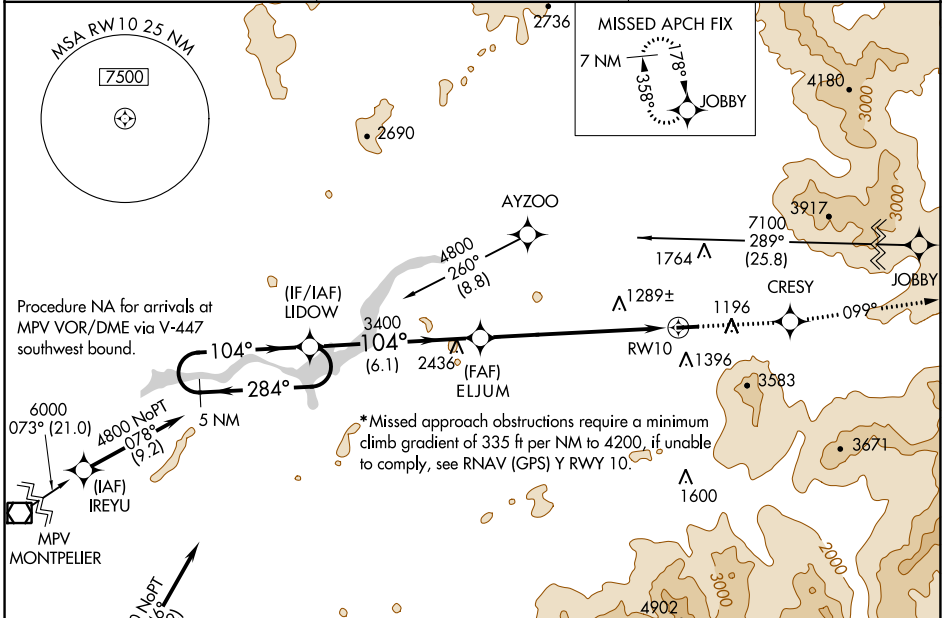
MOUNT WASHINGTON RGNL (HIE)

⚠ DME/DME RNP-0.3 NA. Visibility reduction by helicopters NA. When local altimeter setting not received, use Lyndonville altimeter setting and increase DA 71 feet and LPV all Cals visibility 1/2 mile.

⚠ MISSED APPROACH: Climb to 7100 direct CRESY and via track 099° to JOBBY and hold, continue climb-in-hold to 7100.

❄ -29°C

ASOS 118.525	BOSTON CENTER 135.7 282.2	UNICOM 122.8 (CTAF) ①
------------------------	-------------------------------------	---------------------------------



ELEV 1074	TDZE 1057
-----------	-----------

VGSi and RNAV glidepath not coincident (VGSi Angle 3.50/TCH 45).

5 NM Holding Pattern LIDOW

GP 3.00° TCH 45

4800 ← 284° → 104° → 104° → 3400 → RWY 10

7100 CRESY JOBBY

↑ ↑ ↑

↑ 099° ↑

0.6% UP → 4001 X 75

CATEGORY	A	B	C	D
*LPV DA	1507-1 1/2 450 (500-1 1/2)			NA

NE-1, 28 NOV 2024 to 26 DEC 2024

NE-1, 28 NOV 2024 to 26 DEC 2024