

WAAS CH <b>65629</b> <b>W15A</b>	APP CRS <b>152°</b>	Rwy Idg TDZE <b>12</b> Apt Elev <b>15</b>	<b>6500</b>
--	------------------------	---	-------------

# RNAV (GPS) RWY 15

LAKE CHARLES RGNL (LCH)

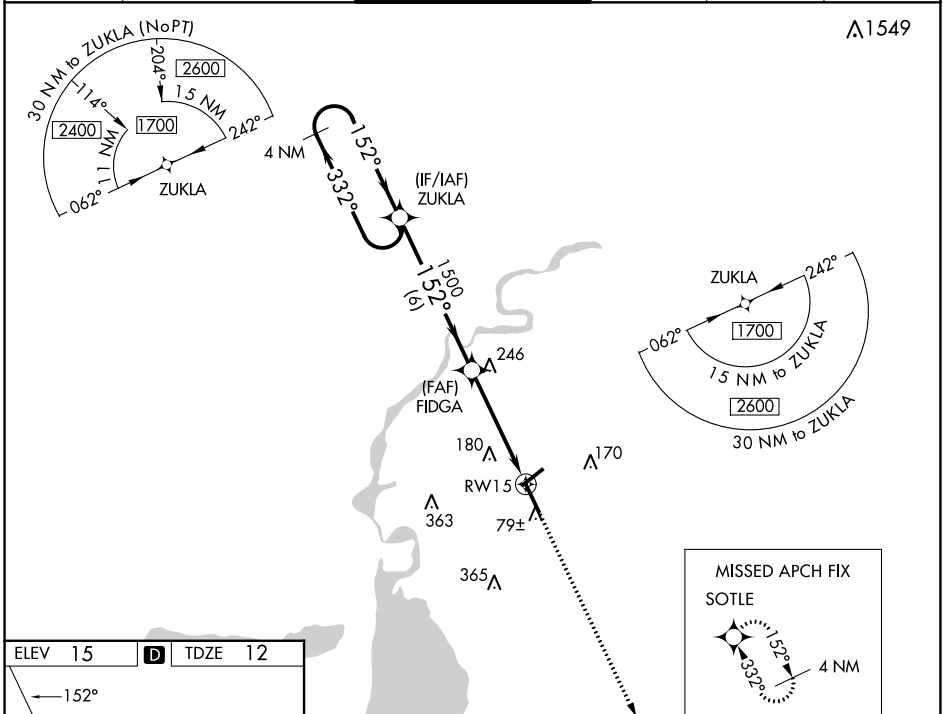
RNP APCH.

For uncompensated Baro-VNAV systems, LNAV/VNAV NA below -3°C (27°F) or above 43°C (109°F). For inop MALS, increase LNAV-VNAV all Cats visibility to 7/8 and LNAV Cats C and D to 1 1/8 mile. \*\*RVR 1800 authorized with use of FD or AP or HUD to DA.



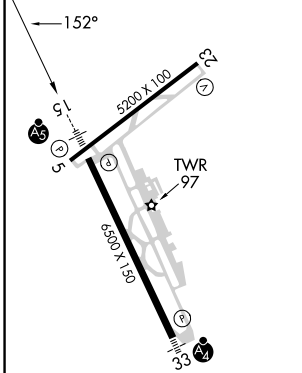
MISSED APPROACH:  
Climb to 1900 direct  
SOTLE and hold.

ATIS <b>118.75</b>	LAKE CHARLES APP CON * <b>119.35 353.75</b>	LAKE CHARLES TOWER * <b>120.7 (CTAF) 257.8</b>	GND CON <b>121.8</b>	CLNC DEL <b>126.25</b>	UNICOM <b>122.95</b>
-----------------------	--	---	-------------------------	---------------------------	-------------------------

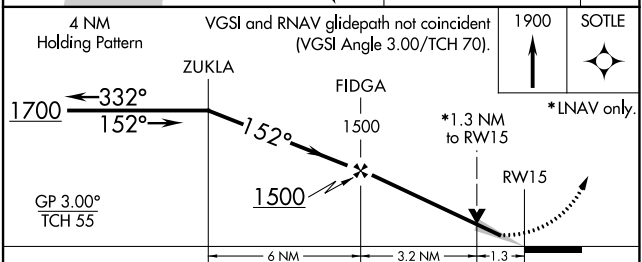


△1549

ELEV 15	<b>D</b>	TDZE 12
---------	----------	---------



REIL Rws 5 and 23  
MIRL Rwy 5-23  
HIRL Rwy 15-33



CATEGORY	A	B	C	D
LPV DA		212/24	200 (200-1/2)	
LNAV/VNAV DA		301/24	289 (300-1/2)	
LNAV MDA	500/24	488 (500-1/2)	500/50	488 (500-1)
<b>C</b> CIRCLING	500-1	485 (500-1)	580-1 1/2 565 (600-1 1/2)	680-2 1/4 665 (700-2 1/4)

SC-4, 28 NOV 2024 to 26 DEC 2024

SC-4, 28 NOV 2024 to 26 DEC 2024