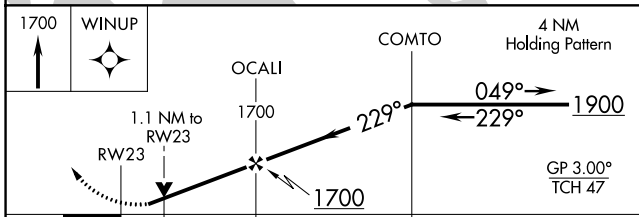
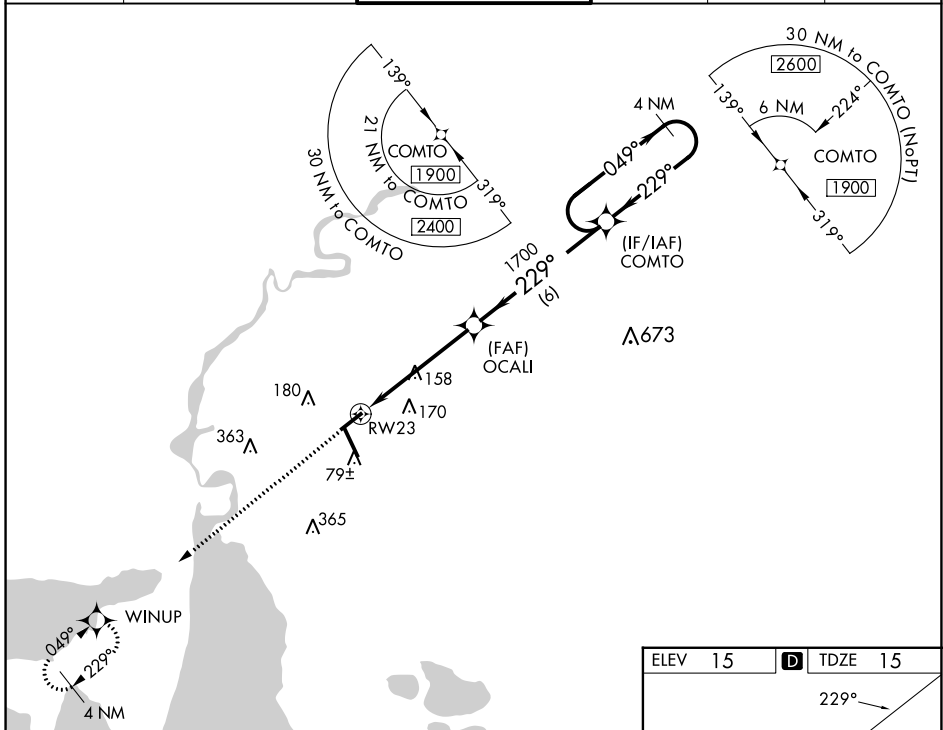


| | | |
|--|------------------------|---|
| WAAS CH 61041 W23A | APP CRS 229° | Rwy Idg 5200 TDZE 15 Apt Elev 15 |
|--|------------------------|---|

RNAV (GPS) RWY 23

LAKE CHARLES RGNL (LCH)

| | | | |
|--|--|---|---------------------------|
| RNP APCH - GPS. | | MISSED APPROACH: Climb to 1700 direct WINUP and hold. | |
| ⚠ For uncompensated Baro-VNAV systems, LNAV/VNAV NA below -2°C or above 54°C. ASR Rwy 23 helicopter visibility reduction below 3/4 SM NA. | | | |
| ATIS 118.75 | LAKE CHARLES APP CON * 119.35 353.75 | LAKE CHARLES TOWER * 120.7 (CTAF) 257.8 | GND CON 121.8 |
| | | | CLNC DEL 126.25 |
| | | | UNICOM 122.95 |



| CATEGORY | A | B | C | D |
|--------------|----------------------|----------------------|------------------------------|----------------------|
| LPV DA | | 265-3/4 | 250 (300-3/4) | |
| LNAV/VNAV DA | | 301-7/8 | 286 (300-7/8) | |
| LNAV MDA | 420-1 | 405 (500-1) | 420-1 1/8 | 405 (500-1 1/8) |
| CIRCLING | 440-1 425 (500-1) | 480-1 465 (500-1) | 580-1 1/2 565 (600-1 1/2) | 680-2 665 (700-2) |

