

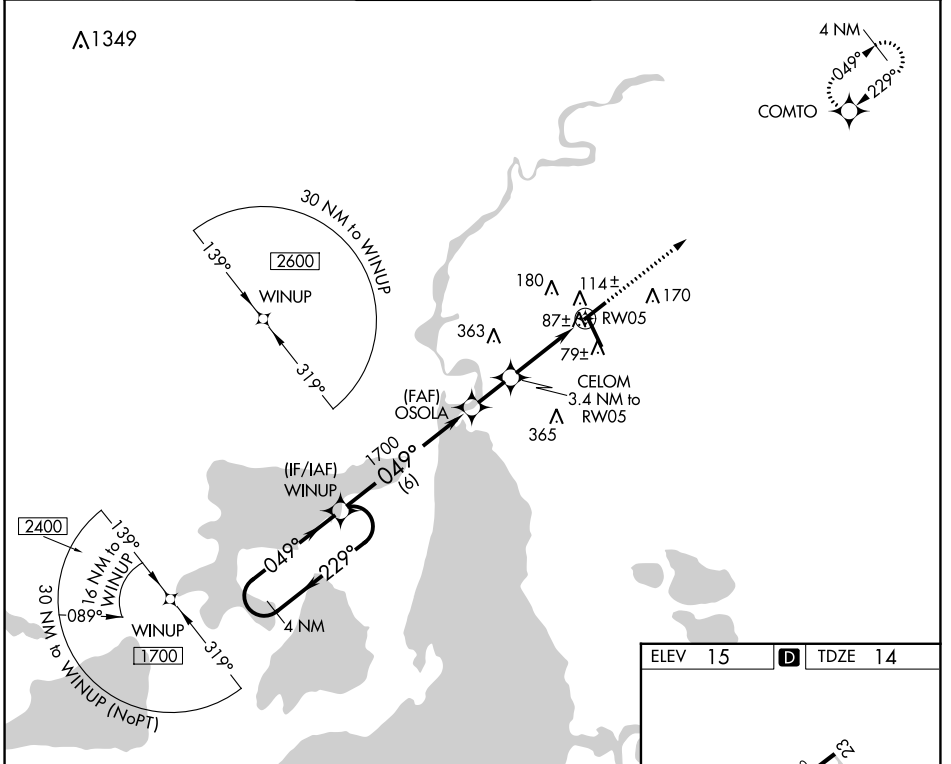
WAAS CH <b>69440</b> <b>W05A</b>	APP CRS <b>049°</b>	Rwy Idg TDZE Apt Elev	<b>5200</b> <b>14</b> <b>15</b>
--	------------------------	-----------------------------	---------------------------------------

# RNAV (GPS) RWY 5

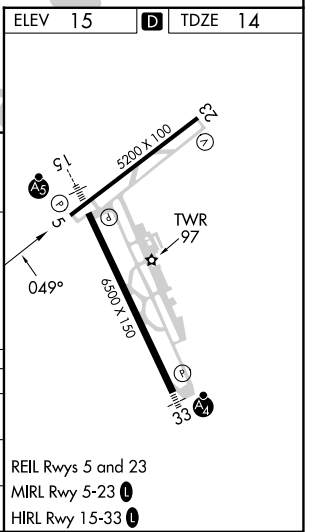
LAKE CHARLES RGNL (LCH)

<b>▽</b> Rwy 5 helicopter visibility reduction below ¼ SM NA. ASR DME/DME RNP-0.3 NA.	MISSED APPROACH: Climb to 1900 direct COMTO and hold.
--	---

ATIS <b>118.75</b>	LAKE CHARLES APP CON * <b>119.35 353.75</b>	LAKE CHARLES TOWER * <b>120.7</b> (CTAF) <b>0 257.8</b>	GND CON <b>121.8</b>	CLNC DEL <b>126.25</b>	UNICOM <b>122.95</b>
-----------------------	--	--	-------------------------	---------------------------	-------------------------



4 NM Holding Pattern	WINUP	OSOLA	1900	COMTO
1700 ← 229°	← 049°	← 049°	↑	✧
1700 → 049°	→ 049°	→ 1700	CELOM 3.4 NM to RW05	0.9 NM to RW05
			1140	
			3.00° TCH 49	
	6 NM	1.8 NM	2.5 NM	0.9
CATEGORY	A	B	C	D
LP MDA		340-1	326 (400-1)	
LNAV MDA		380-1	366 (400-1)	
<b>C</b> CIRCLING	440-1 425 (500-1)	480-1 465 (500-1)	580-1½ 565 (600-1½)	680-2 665 (700-2)



SC-4, 28 NOV 2024 to 26 DEC 2024

SC-4, 28 NOV 2024 to 26 DEC 2024